



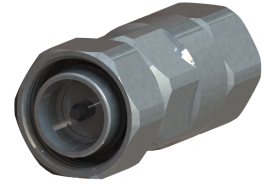
OMNI FIT™ high performance connectors are designed for use with both CELLFLEX® (copper) and CELLFLEX® Lite (aluminium) cables. They are designed specifically to provide the highest quality connector-cable interface while simplifying and speeding up connector attachment. All RFS Technologies connectors are fully tested for mechanical and electrical compliance to industry specifications.

The 4.3-10 connector is an innovative, space-saving RF connection meeting all requirements even under the most severe environmental conditions and not relying on coupling nut torque. Sealing against outer conductor and jacket by means of the o-ring and 360° compression fit.

Multifunctional, self-lubricating HighTech polymer assembly locks on cable corrugation, avoids electrochemical potential differences and compression-fits to the jacket.

**FEATURES / BENEFITS**

- Ultra high PIM performance i.e. reduced interference leading to high customer satisfaction
- Two-piece design i.e. visual inspection of interlocking leads to improved installation security
- OMNI FIT™ concept i.e. streamlined order management and reduced stock level
- Watertight sealing in mated and unmated condition, i.e. reduced efforts during installation and improved security during operation
- Tri metal alloy plating i.e. extreme resistance against corrosion even under hardest climatic and environmental circumstances
- Multi-thread (Tristart) design i.e. simplified and accelerated tightening process
- RoHS (EU) and CRoHS (China) compliant i.e. can be used on a global basis



**Technical features**

**GENERAL SPECIFICATIONS**

|                               |  |                                 |
|-------------------------------|--|---------------------------------|
| <b>Transmission Line Type</b> |  | Coaxial Cable                   |
| <b>Cable Size</b>             |  | 1/4                             |
| <b>Cable Type</b>             |  | Foam Dielectric Superflexible   |
| <b>Model Series</b>           |  | LCF14-50 Series                 |
| <b>Connector Interface</b>    |  | 4.3-10                          |
| <b>Connector Type</b>         |  | OMNI FIT™ PREMIUM Straight      |
| <b>Sealing Method</b>         |  | Polymer claw + 360° Compression |
| <b>Gender</b>                 |  | Male                            |

**ELECTRICAL SPECIFICATIONS**

|  |           |  |
|--|-----------|--|
| <b>Nominal Impedance, ohms</b>           | Ohm       | 50   |
| <b>3rd Order IM Product @ 2x20 Watts</b> | dBc       | -163 ; typical -167  |
| <b>Maximum Frequency</b>                 | GHz       | 6.0  |
| <b>VSWR, Return Loss</b>                 | VSWR (dB) | 0 &lt; f ≤ 1.0 GHz: 1.02 (40)<br>1.0 &lt; f ≤ 2.2 GHz: 1.04 (34)<br>2.2 &lt; f ≤ 2.7 GHz: 1.04 (34)<br>2.7 &lt; f ≤ 3.8 GHz: 1.08 (28)<br>3.8 &lt; f ≤ 5.0 GHz: 1.17 (22)<br>5.0 &lt; f ≤ 6.0 GHz: 1.22 (20) |



MECHANICAL SPECIFICATIONS

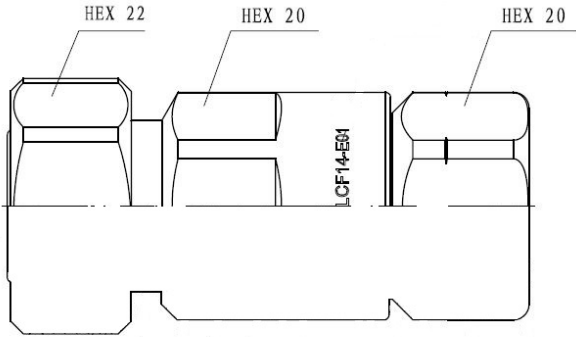
|                          |         |                          |
|--------------------------|---------|--------------------------|
| Plating Outer/Inner      |         | Tri metal alloy / Silver |
| Length                   | mm (in) | 50 (1.969)               |
| Outer Diameter           | mm (in) | 22 (0.866)               |
| Inner Contact Attachment |         | Basket                   |
| Outer Contact Attachment |         | 360° clamping            |

ACCESSORIES

|                   |         |    |
|-------------------|---------|----|
| Wrench size front | mm (in) | 22 |
| Wrench size rear  | mm (in) | 20 |

TESTING AND ENVIRONMENTAL

|                  |  |      |
|------------------|--|------|
| Waterproof Level |  | IP68 |
|------------------|--|------|



External Document Links  
[Installation Instruction](#)

[Notes](#)