

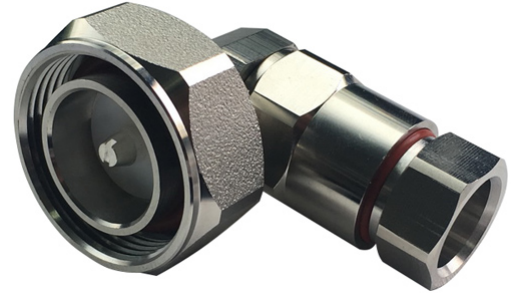


OMNI FIT™ high performance connectors are designed for use with both CELLFLEX® (copper) and CELLFLEX® Lite (aluminum) cables. They are designed specifically to provide the highest quality connector-cable interface while simplifying and speeding up connector attachment. All RFS Technologies connectors are fully tested for mechanical and electrical compliance to industry specifications.

The 7-16 connector is the most rugged RF connection meeting all requirements even under the most severe environmental conditions.

**FEATURES / BENEFITS**

- Cost effective two-piece design for safe and easy installation
- Robust mechanical design for low and consistent intermodulation performance i.e. keeps the mobile network performance up, reduces the number of dropped calls and avoids revenue losses
- Standard electrical performance for consistent and repeatable VSWR i.e. ensure network system performance
- Waterproof to IP 68 i.e. no downtime risk, secures revenue
- RoHS (EU) compliant i.e. can be used on a global basis



716MR-SCF12-C03

**Technical features**

**GENERAL SPECIFICATIONS**

<b>Transmission Line Type</b>		Coaxial Cable
<b>Cable Size</b>		1/2
<b>Cable Type</b>		Foam Dielectric Superflexible
<b>Model Series</b>		SCF12-50 Series
<b>Connector Interface</b>		7-16
<b>Connector Type</b>		OMNI FIT™ Standard
<b>Sealing Method</b>		O-ring
<b>Gender</b>		Male Right Angle

**ELECTRICAL SPECIFICATIONS**

<b>Nominal Impedance, ohms</b>	Ohm	50
<b>3rd Order IM Product @ 2x20 Watts</b>	dBc	-157 ; typical -160
<b>Maximum Frequency</b>	GHz	6.0
<b>VSWR, Return Loss</b>	VSWR (dB)	0 &lt; f ≤ 1.0 GHz: 1.04 (34.1) 1 &lt; f ≤ 2.2 GHz: 1.07 (29.4) 2.2 &lt; f ≤ 2.7 GHz: 1.09 (27.3) 2.7 &lt; f ≤ 3.7 GHz: 1.13 (24.3) 3.7 &lt; f ≤ 5.0 GHz: 1.25 (19.1) 5.0 &lt; f ≤ 6.0 GHz: 1.30 (17.7)

**MECHANICAL SPECIFICATIONS**

<b>Plating Outer/Inner</b>		Trimetal/Silver
<b>Length</b>	mm (in)	53.7 (2.11)
<b>Outer Diameter</b>	mm (in)	38.7 (1.52)
<b>Inner Contact Attachment</b>		Basket
<b>Outer Contact Attachment</b>		Rigidity impactation

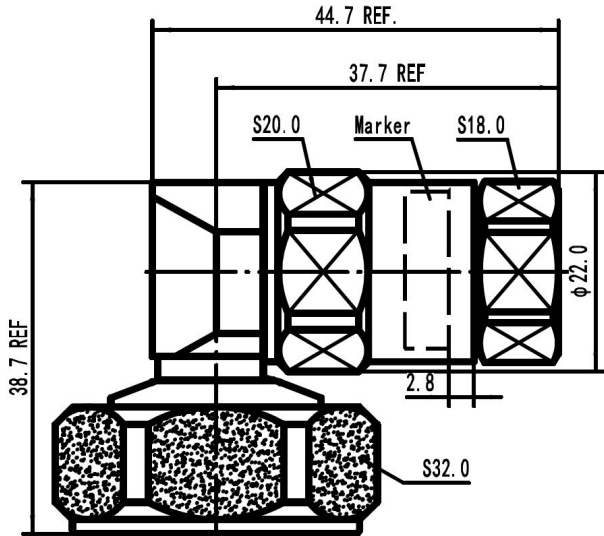


ACCESSORIES

Wrench size front	mm (in)	18 (3/4)
Wrench size rear	mm (in)	20 (13/16)
Trimming Tool		TRIM-SET-S12-C02

TESTING AND ENVIRONMENTAL

Waterproof Level		IP68
------------------	--	------



716MR-SCF12-C03 Outline drawing

External Document Links

[Application Note](#)

[Installation Instruction](#)

Notes