



These high-performance air dielectric coaxial cable connectors are characterized by excellent gas tightness and extremely low losses. The connectors can be installed with basic hand tools. Tab flare of outer connection and use of o-ring sealing simplifies installation of the connector. The connectors are fully tested for mechanical and electrical compliance to specifications. The connectors have excellent electrical values and provide outstanding performance for the most demanding applications. The connector design provides maximum sealing integrity and gas tightness.

FEATURES / BENEFITS

- Easy installation utilizing only basic hand tools.
- Tab flare of outer contact attachment means quick and simple installation.
- No need for sealing compound. The connector is ready for pressurization immediately after installed to the cable.
- Excellent gas tightness. Overpressure for increased voltage handling is maintained throughout the system.
- Outstanding VSWR performance improves overall system performance.
- Totally waterproof, assures safe, long term operation in the harshest of environments.
- RoHS (EU) and CRoHS (China) compliant, can be used on a global basis.



78EIA Connector for HCA78 Cable

Technical features

GENERAL SPECIFICATIONS

Transmission Line Type		Coaxial Cable
Cable Size		7/8"
Cable Type		Air Dielectric
Model Series		HCA78-50 Series
Connector Interface		7/8" EIA
Connector Type		Gas stop/ Gas pass - See Note 1)
Sealing Method		O-ring seal
Gender		Female - See Note 2)

ELECTRICAL SPECIFICATIONS

Insertion loss	dB	< 0.05dB
VSWR, Return Loss	VSWR (dB)	0 to 1 GHz: 1.02 (40) 1 GHz to 2.7 GHz: 1.07 (30)

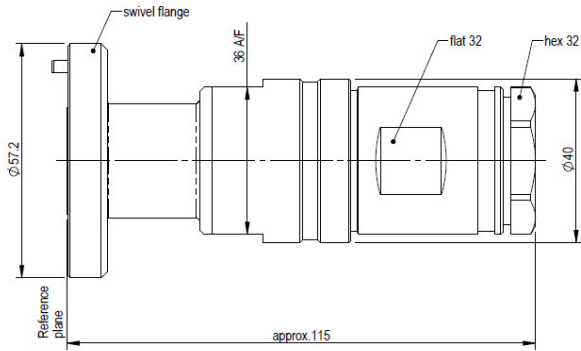
MECHANICAL SPECIFICATIONS

Plating Outer/Inner		Tri Plate/Silver
Length	mm (in)	115 (4.53)
Outer Diameter	mm (in)	57.2 (2.25)
Outer Contact Attachment		Tab Flare



78EIA-HCA78-019

7/8" EIA Connector for 7/8" Coaxial Cable, Gas stop/ Gas pass, O-Ring Sealing



78EIA-HCA78-019 connector, dimensions in mm

External Document Links

Notes

1) The connector is converted to gas pass by drilling through the pilot hole in the insulator.

2) Connector model with -019KT suffix denote connectors that are supplied with an inner connector and flange hardware.

Connector model -019 does not include an inner connector and flange hardware.