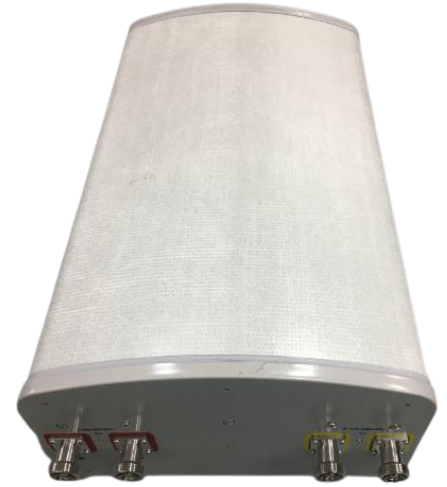


**FEATURES / BENEFITS**

- 2 ports / 1 cross pol system in low band (698-960MHz)
- 2 ports / 1 cross pol system in high band (1710-2690MHz)
- Fixed tilt



**Technical features**

**ELECTRICAL SPECIFICATIONS**

Electrical Specification Header		LOW BAND ARRAY (698-960 MHz) [R1]		
Frequency Band	MHz	698-806	790-894	880-960
Gain Typical	dBi	12.1	12.1	12.1
Gain Over all Tilts	dBi	11.1 +/- 1	12 +/- 0.1	12 +/- 0.1
Azimuth Beamwidth 3dB	Deg	68.5 +/- 1.5	66.3 +/- 1.5	65.7 +/- 1.2
Elevation Beamwidth 3dB	Deg	39.6 +/- 2.5	35.4 +/- 1.5	35.4 +/- 0.7
Cross Polar Discrimination at Boresight	dB	22.6	23.4	25.8
Cross Polar Discrimination over Sector	dB	11	10.9	9.7
F/B at +/-30deg Total Power	dB	22.2	23	23
First Upper Side Lobe Suppression	dB	11	12	10.9
Electrical Downtilt	Deg		5	
Cross Polar Isolation	dB		24	
Interband Isolation	dB		24	
VSWR	-		1.5	
Passive Intermodulation (3rd Order, 2 x 43dBm)	dBc		-153	
Maximum Effective Power per Port	Watt		350	

**ELECTRICAL SPECIFICATIONS**

Electrical Specification Header		HIGH BAND ARRAY (1710-2690 MHz) [Y1]				
Frequency Band	Mhz	1710-1880	1850-1990	1920-2170	2300-2400	2490-2690
Gain Typical	dBi	14.1	13.9	13.8	14.1	15
Gain Over all Tilts	dBi	13.1 +/- 1	13.4 +/- 0.5	13.3 +/- 0.5	13.6 +/- 0.5	14.5 +/- 0.5
Azimuth Beamwidth 3dB	Deg	66.8 +/- 6.5	66.4 +/- 4.2	66.6 +/- 4	70.2 +/- 2.3	66.2 +/- 6.8
Elevation Beamwidth 3 dB	Deg	19.2 +/- 1	17.8 +/- 0.6	16.9 +/- 1	14.6 +/- 0.8	13.5 +/- 1.6
Cross Polar Discrimination at Boresight	dB	20.8	21.9	21.7	17.6	17.1
Cross Polar Discrimination over Sector	dB	8	9.6	10	11.5	2
F/B at +/-30deg Total Power	dB	20.9	23.3	21.4	18.5	18
First Upper Side Lobe Suppression	dB	14.6	16.1	14	12.3	10.9
Electrical Downtilt	Deg	5				
Cross Polar Isolation	dB	24				
Interband Isolation	dB	24				
VSWR	-	1.5				
Passive Intermodulation (3rd Order, 2 x 43dBm)	dBc	-153				
Maximum Effective Power per Port	Watt	250				

**ELECTRICAL SPECIFICATIONS**

Impedance	Ohm	50
Polarization	Deg	±45°

**MECHANICAL SPECIFICATIONS**

Dimensions - H x W x D	mm (in)	620 x 350 x 200 (24.4 x 13.8 x 7.9)
Weight (Antenna Only)	kg (lb)	8 (17.6)
Weight (Mounting Hardware only)	kg (lb)	4.5 (9.9)
Packing size- HxWxD	mm (in)	895 x 445 x 295 (35.2 x 17.5 x 11.6)
Shipping Weight	kg (lb)	15.7 (34.6)
Connector type		4 x 4.3-10 female/bottom
Radome Material / Color		Fiberglass / Light Gray

**TESTING AND ENVIRONMENTAL**

Temperature Range	°C (°F)	-40 to 60 (-40 to 140 )
Lightning protection		DC Ground
Survival/Rated Wind Velocity	km/h	200 (150 )
Wind Load @Rated Wind Front	N	253
Wind Load @Rated Wind Side	N	85
Wind Load @Rated Wind Rear	N	155

**APXBL06B\_43-CT5**

Dual band X-pol Antenna, 698-960/1710-2690MHz, 65deg, 12.2/15.3dBi, 0.6m, 5deg, Fixed

**ORDERING INFORMATION**

Order No.	Configuration	Mounting Hardware	Mounting pipe Diameter	Shipping Weight
APXBL06B_43-CT5	Fixed tilt	APM50-B1	50-110 mm	15.7 kg

