



**FEATURES / BENEFITS**

- 2 ports / 1 cross pol systems in low band (698-960MHz)
- Integrated and field replaceable SRET
- ACU HW Version: 2.02
- Compliant with AISG V2.0 and 3GPP

**Technical features**

**ELECTRICAL SPECIFICATIONS**

Electrical Specification Header		LOW BAND ARRAY (698-960) [R1]		
Frequency Band	MHz	698 - 790	790 - 890	890 - 960
Gain Typical	dBi	14.7	15.2	15.1
Gain Over all Tilts	dBi	14.1+/-0.6	14.7+/-0.5	15.0+/-0.1
Azimuth Beamwidth 3dB	Deg	69.3+/-2	66+/-2.5	63.5+/-1.9
Elevation Beamwidth 3dB	Deg	17.2+/-1.4	14.8+/-1	13.5+/-0.6
Cross Polar Discrimination at Boresight	dB	25.1	22.8	27.4
Cross Polar Discrimination over Sector	dB	13.1	6.8	11.4
F/B at +/-30deg Total Power	dB	23.1	25	23.4
First Upper Side Lobe Suppression	dB	20.6	18.4	15
Electrical Downtilt	Deg	2 to 15		
Cross Polar Isolation	dB	26		
VSWR	-	1.5		
Passive Intermodulation (3rd Order, 2 x 43dBm)	dBc	-150		
Maximum Effective Power per Port	Watt	350		

**ELECTRICAL SPECIFICATIONS**

Impedance	Ohm	50
Polarization	Deg	±45°



**MECHANICAL SPECIFICATIONS**

<b>Dimensions - H x W x D</b>	mm (in)	1490 x 320 x 140 (58.7 x 12.6 x 5.5)
<b>Weight (Antenna Only)</b>	kg (lb)	13.7 (30.2)
<b>Weight (Mounting Hardware only)</b>	kg (lb)	4.5 (9.9)
<b>Packing size- HxWxD</b>	mm (in)	1766 x 415 x 235 (69.5 x 16.3 x 9.3)
<b>Shipping Weight</b>	kg (lb)	21.6 (47.6)
<b>Connector type</b>		2 x 4.3-10 female/bottom + 2 AISG connectors (1 male, 1 female)
<b>Radome Material / Color</b>		Fiberglass / Light Grey RAL7035

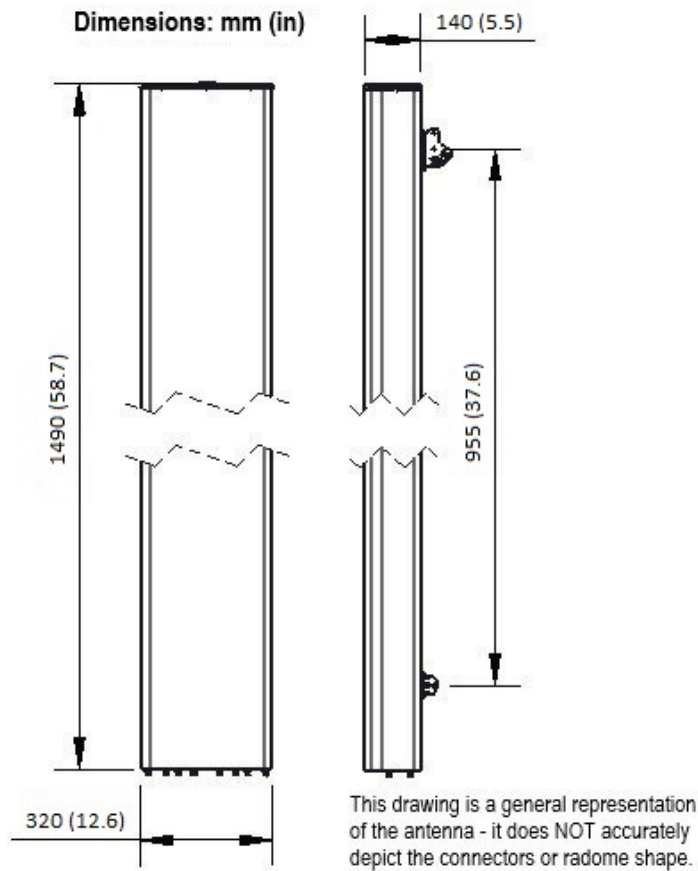
**TESTING AND ENVIRONMENTAL**

<b>Temperature Range</b>	°C (°F)	-40 to 60 (-40 to 140 )
<b>Lightning protection</b>		Direct Ground
<b>Survival/Rated Wind Velocity</b>	km/h	200 (150 )
<b>Wind Load @Rated Wind Front</b>	N	516
<b>Wind Load @Rated Wind Side</b>	N	193
<b>Wind Load @Rated Wind Rear</b>	N	614

**ORDERING INFORMATION**

Order No.	Configuration	Mounting Hardware	Mounting pipe Diameter	Shipping Weight
APXVB15B_43-C-I20	Internal RET (ACU-I20-B1)	APM50-B1	50-110mm	21.6 kg





External Document Links

[APM50\\_Series\\_Installation\\_Instructions](#)

Notes

- All electrical parameters are compliant with BASTA NGMN 11.1 requirements.
- For additional mounting information please click ""External Document Links"".

- **Radiating patterns:** [Request pattern files](#)