

FEATURES / BENEFITS

- 2 ports, 1 cross pol system in low band (698-960MHz)
- Integrated and field replaceable SRET
- ACU HW Version -2.02
- Compliant with AISG V2.0 and 3GPP



Technical features

ELECTRICAL SPECIFICATIONS

Electrical Specification Header		LOW BAND ARRAY (698-960) [R1]		
Frequency Band	MHz	698 - 806	790 - 894	880 - 960
Gain Typical	dBi	16.1	17.0	17.0
Gain Over all Tilts	dBi	15.1 +/- 1	16.0 +/- 1	16.5 +/- 0.5
Azimuth Beamwidth 3dB	Deg	68.4 +/- 1.5	66 +/- 2	63.5 +/- 1.5
Elevation Beamwidth 3dB	Deg	11.8 +/- 1	10.3 +/- 1	9 +/- 1
Cross Polar Discrimination at Boresight	dB	30	28	30
Cross Polar Discrimination over Sector	dB	13	12	11
F/B at +/-30deg Total Power	dB	24	25.9	25
First Upper Side Lobe Suppression	dB	22	21	17
Electrical Downtilt	Deg	2 to 12		
Cross Polar Isolation	dB	28		
VSWR	-	1.5		
Passive Intermodulation (3rd Order, 2 x 43dBm)	dBc	-153		
Maximum Effective Power per Port	Watt	350		

ELECTRICAL SPECIFICATIONS

Impedance	Ohm	50
Polarization	Deg	±45°

MECHANICAL SPECIFICATIONS

Dimensions - H x W x D	mm (in)	2005 x 320 x 140 (78.9 x 12.6 x 5.5)
Weight (Antenna Only)	kg (lb)	18.5 (40.8)
Weight (Mounting Hardware only)	kg (lb)	4.5 (9.9)
Packing size- HxWxD	mm (in)	2285 x 415 x 235 (90 x 16.3 x 9.3)
Shipping Weight	kg (lb)	26 (57.3)
Connector type		2 x 4.3-10 female/bottom + 2 AISG connectors (1 male, 1 female)
Radome Material / Color		Fiberglass / Light Grey RAL7035

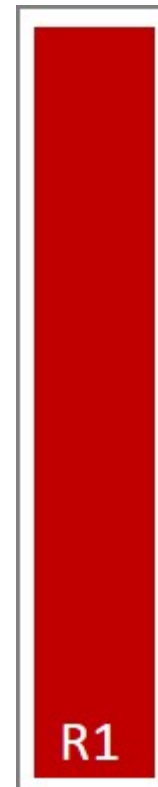
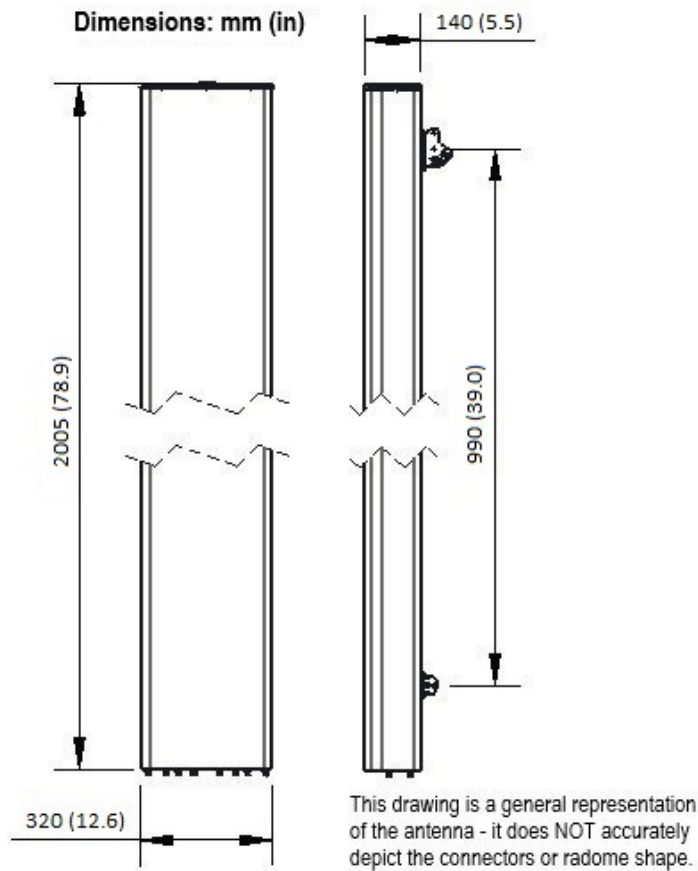
TESTING AND ENVIRONMENTAL

Temperature Range	°C (°F)	-40 to 60 (-40 to 140)
Lightning protection		Direct Ground
Survival/Rated Wind Velocity	km/h	200 (150)
Wind Load @Rated Wind Front	N	425
Wind Load @Rated Wind Side	N	406
Wind Load @Rated Wind Rear	N	493

ORDERING INFORMATION

Order No.	Configuration	Mounting Hardware	Mounting pipe Diameter	Shipping Weight
APXVB20B_43-C-I20	Internal RET (ACU-I20-B1)	APM50-B1	50-110mm	26.0 kg





External Document Links

[APM50_Series_Installation_Instructions](#)

Notes

- All electrical parameters are compliant with BASTA NGMN 11.1 requirements.
- For additional mounting information please click "External Document Links".

- **Radiating patterns:** [Request pattern files](#)