

APXVB26B_43-C-I20, -A-I20

2-Ports, X-Pol, Panel Antenna, 2.5m,1x698-960MHz, 65deg, Integrated RET



FEATURES / BENEFITS

- 2 ports / 1 cross pol system in low band (698-960MHz)
- Integrated and field replaceable SRET
- ACU HW Version -2.02
- Optional with Direct Pipe no tilt mounting hardware (Model name Suffix -A-I20)
- Compliant with AISG V2.0 and 3GPP

Technical features

ELECTRICAL SPECIFICATIONS

Electrical Specification Header		LOW BAND ARRAY (698-960) [R1]		
Frequency Band	MHz	698 - 806	790 - 894	880 - 960
Gain Typical	dBi	16.9	17.1	17.7
Gain Over all Tilts	dBi	16.4 +/- 0.5	17 +/- 0.1	17.2 +/- 0.5
Azimuth Beamwidth 3dB	Deg	68.7 +/- 1.5	66.5 +/- 2	63.4 +/- 1.5
Elevation Beamwidth 3dB	Deg	8.8 +/- 1	8 +/- 0.7	7.1 +/- 0.5
Cross Polar Discrimination at Boresight	dB	25	24	27
Cross Polar Discrimination over Sector	dB	13	11.4	10
F/B at +/-30deg Total Power	dB	24	26	25.8
First Upper Side Lobe Suppression	dB	19.3	18	17
Electrical Downtilt	Deg	2 to 12		
Cross Polar Isolation	dB	28		
VSWR	-	1.5		
Passive Intermodulation (3rd Order, 2 x 43dBm)	dBc	-150		
Maximum Effective Power per Port	Watt	350		

ELECTRICAL SPECIFICATIONS

Impedance	Ohm	50
Polarization	Deg	±45°



MECHANICAL SPECIFICATIONS

Dimensions - H x W x D	mm (in)	2495 x 320 x 140 (98.2 x 12.6 x 5.5)
Weight (Antenna Only)	kg (lb)	22 (48.5)
Packing size- HxWxD	mm (in)	2775 x 415 x 235 (109.3 x 16.3 x 9.2)
Connector type		2 x 4.3-10 female/bottom + 2 AISG connectors (1 male, 1 female)
Radome Material / Color		Fiberglass / Light Grey RAL7035

TESTING AND ENVIRONMENTAL

Temperature Range	°C (°F)	-40 to 60 (-40 to 140)
Lightning protection		Direct Ground
Survival/Rated Wind Velocity	km/h	200 (150)
Wind Load @Rated Wind Front	N	538
Wind Load @Rated Wind Side	N	469
Wind Load @Rated Wind Rear	N	638

ORDERING INFORMATION

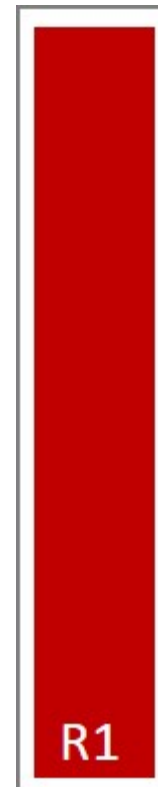
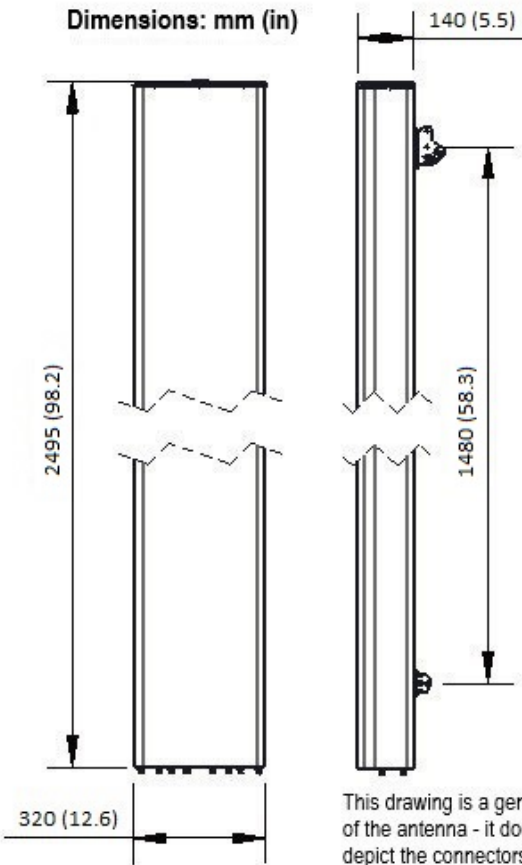
Order No.	Configuration	Mounting Hardware	Mounting pipe Diameter	Shipping Weight kg(lb)	Mounting Hardware Weight kg(lb)
APXVB26B_43-C-I20	Internal RET (ACU-I20-B1)	APM50-B1	50-110mm	31.5 (69.4)	4.5 (9.9)
APXVB26B_43-A-I20	Internal RET (ACU-I20-B1)	APM50-B1N (Direct Pipe no tilt)	50-110mm	30.4 (67.0)	3.4 (7.5)



PRODUCT DATASHEET

APXVB26B_43-C-I20, -A-I20

2-Ports, X-Pol, Panel Antenna, 2.5m, 1x698-960MHz, 65deg, Integrated RET



External Document Links
[APM50_Series_Installation_Instructions](#)

- Notes
- All electrical parameters are compliant with BASTA NGMN 11.1 requirements.
 - For additional mounting information please click "External Document Links".

• Radiating patterns: [Request pattern files](#)