

**FEATURES / BENEFITS**

- 2 ports / 1 cross pol system in low band (694-960MHz)
- 2 ports / 1 cross pol system in high band (1695-2690MHz)
- Manual VET



**Technical features**

**ELECTRICAL SPECIFICATIONS**

Electrical Specification Header		Low Band Array (694-960 MHz) [R1]		
Frequency Band	MHz	694 - 806	790 - 894	880 - 960
Gain Typical	dBi	15.2	15.6	16
Gain Over all Tilts	dBi	14.5 +/- 0.7	15.2 +/- 0.4	15.7 +/- 0.3
Azimuth Beamwidth 3dB	Deg	65.7 +/- 3.4	62.4 +/- 1.7	59.7 +/- 1.9
Elevation Beamwidth 3dB	Deg	15.2 +/- 1.4	13.4 +/- 0.7	12.5 +/- 0.7
Cross Polar Discrimination at Boresight	dB	28	27.9	30.8
Cross Polar Discrimination over Sector	dB	6.2	6.9	5
F/B at +/-30deg Total Power	dB	21.7	24.3	24.9
First Upper Side Lobe Suppression	dB	14.8	15	17.1
Electrical Downtilt	Deg	2 to 14		
Cross Polar Isolation	dB	28		
Interband Isolation	dB	28		
VSWR	-	1.5		
Passive Intermodulation (3rd Order, 2 x 43dBm);dBc;-153;	dBc	-153		
Maximum Effective Power per Port	Watt	300		

**ELECTRICAL SPECIFICATIONS**

Electrical Specification Header		High Band Left Array (1695-2690 MHz) [Y1]				
Frequency Band	MHz	1695 - 1880	1850 - 1990	1920 - 2170	2300 - 2400	2490 - 2690
Gain Typical	dBi	16.9	17.5	17.7	18.1	19
Gain Over all Tilts	dBi	16.4 +/- 0.5	17.1 +/- 0.4	17.3 +/- 0.4	17.8 +/- 0.3	18.3 +/- 0.7
Azimuth Beamwidth 3dB	Deg	72.7 +/- 5.3	67 +/- 3.7	68 +/- 3.8	67 +/- 4.4	60.5 +/- 5.5
Elevation Beamwidth 3dB	Deg	6.3 +/- 0.4	5.8 +/- 0.3	5.5 +/- 0.4	4.9 +/- 0.2	4.5 +/- 0.3
Cross Polar Discrimination at Boresight	dB	28.1	29	26.9	24	23.8
Cross Polar Discrimination over Sector	dB	9.9	9.1	8.9	14.6	9.4
F/B at +/-30deg Total Power	dB	24.2	26.4	26.1	26	22.2
First Upper Side Lobe Suppression	dB	17.3	19.1	18.9	20.3	19.9
Electrical Downtilt	Deg	2 to 12				
Cross Polar Isolation	dB	28				
Interband Isolation	dB	28				
VSWR	-	1.5				
Passive Intermodulation (3rd Order, 2 x 43dBm)	dBc	-153				
Maximum Effective Power per Port	Watt	250				

**ELECTRICAL SPECIFICATIONS**

Impedance	Ohm	50
Polarization	Deg	±45°

**MECHANICAL SPECIFICATIONS**

Dimensions - H x W x D	mm (in)	1498 x 398 x 158 (59 x 15.7 x 6.2)
Weight (Antenna Only)	kg (lb)	20.5 (45.2)
Weight (Mounting Hardware only)	kg (lb)	5.5 (12.1)
Packing size- HxWxD	mm (in)	1698 x 493 x 278 (66.9 x 19.4 x 10.9)
Shipping Weight	kg (lb)	29 (63.9)
Connector type		6x 4.3-10 female/bottom
Radome Material / Color		Fiberglass / Light Grey RAL7035

**TESTING AND ENVIRONMENTAL**

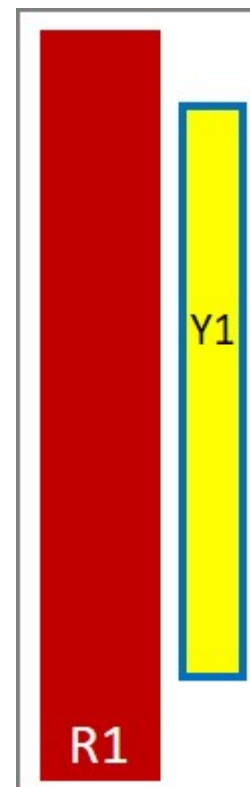
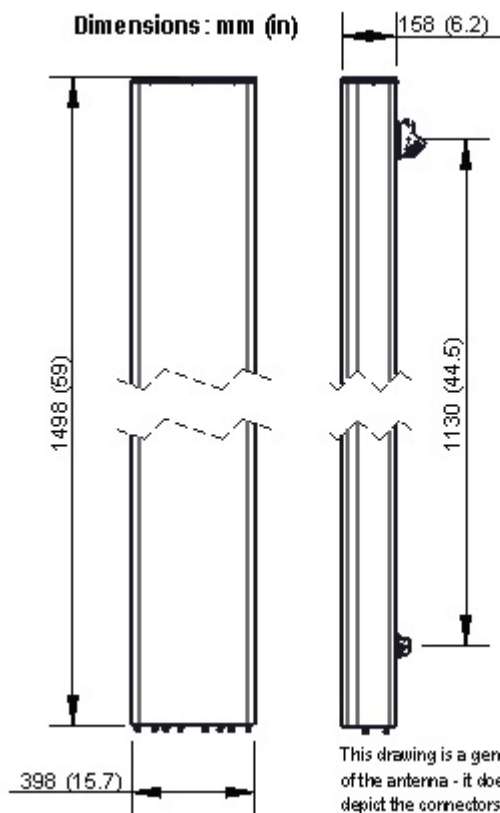
Temperature Range	°C (°F)	-40 to 60 (-40 to 140 )
Lightning protection		DC Ground
Survival/Rated Wind Velocity	km/h	200 (150 )
Wind Load @Rated Wind Front	N	399
Wind Load @Rated Wind Side	N	345
Wind Load @Rated Wind Rear	N	463

**APXVBL15H\_43-C**

4-Ports, X-Pol, Panel Antenna, 1.5m, 694-960/1695-2690MHz, 65deg, Manual VET

**ORDERING INFORMATION**

Order No.	Configuration	Mounting Hardware	Mounting pipe Diameter	Shipping Weight
APXVBL15H_43-C	Manual VET	APM50-H2	50-125mm	29 kg



External Document Links

[APM50\\_Series\\_Installation\\_Instructions](#)

Notes

- All electrical parameters are compliant with BASTA NGMN 11.1 requirements.
- For additional mounting information please click "External Document Links".
- **Radiating patterns:** [Request pattern files](#)