

**APXVBLL20B\_43-C-I20, -A-I20**

6-Ports, X-Pol, Panel Antenna, 2.0m, 1x 698-960/2x 1710-2690MHz, 65deg, Integrated RET



**FEATURES / BENEFITS**

- 2 ports / 1 cross pol system in low band (698-960MHz)
- 4 ports / 2 cross pol systems in high band (1710-2690MHz)
- Supporting 4x4 MIMO in high band
- Integrated and field replaceable SRET
- ACU HW Version: 2.02
- Optional with Direct Pipe no tilt mounting hardware (Model name Suffix -A-I20)
- Compliant with AISG V2.0 and 3GPP

**Technical features**

**ELECTRICAL SPECIFICATIONS**

Electrical Specification Header		Low Band Array (698-960 MHz) [R1]		
Frequency Band	MHz	698-806	790-894	880-960
Gain Typical	dBi	15.6	16.3	16.1
Gain Over all Tilts	dBi	15.1 +/- 0.5	15.5 +/- 0.8	15.8 +/- 0.3
Azimuth Beamwidth 3dB	Deg	66.1 +/- 1.8	64.6 +/- 2.5	63 +/- 1
Elevation Beamwidth 3dB	Deg	12.2 +/- 1.1	10.9 +/- 0.7	9.6 +/- 1
Cross Polar Discrimination at Boresight	dB	26	24.3	20.9
Cross Polar Discrimination over Sector	dB	10.1	10.2	11.1
F/B at +/-30deg Total Power	dB	24.6	24.1	22.7
First Upper Side Lobe Suppression	dB	15.3	13.7	9
Electrical Downtilt	Deg	2 to 12		
Cross Polar Isolation	dB	26		
Interband Isolation	dB	26		
VSWR	-	1.5		
Passive Intermodulation (3rd Order, 2 x 43dBm)	dBc	-150		
Maximum Effective Power per Port	Watt	350		



**ELECTRICAL SPECIFICATIONS**

Electrical Specification Header		High Band Array (1710-2690 MHz) [Y1]				
Frequency Band	MHz	1710-1880	1850-1990	1920-2170	2300-2400	2490-2690
Gain Typical	dBi	16.8	16.9	17.2	17	17.1
Gain Over all Tilts	dBi	16.1 +/- 0.7	16.6 +/- 0.3	16.8 +/- 0.4	16.2 +/- 0.8	16.6 +/- 0.5
Azimuth Beamwidth 3dB	Deg	66.2 +/- 7	67 +/- 3.5	66 +/- 4	69 +/- 3.2	64.8 +/- 5.3
Elevation Beamwidth 3dB	Deg	6.6 +/- 0.4	6.2 +/- 0.3	5.8 +/- 0.6	5.1 +/- 0.4	4.7 +/- 0.3
Cross Polar Discrimination at Boresight	dB	26.3	23	22.9	18.6	17
Cross Polar Discrimination over Sector	dB	7.5	6.1	6.2	8.8	5.8
F/B at +/-30deg Total Power	dB	19.5	20.4	22.4	23	22.3
First Upper Side Lobe Suppression	dB	17.3	17.1	17.8	15.7	15.1
Electrical Downtilt	Deg	2 to 11				
Cross Polar Isolation	dB	26				
Interband Isolation	dB	26				
VSWR	-	1.5				
Passive Intermodulation (3rd Order, 2 x 43dBm)	dBc	-150				
Maximum Effective Power per Port	Watt	250				



**ELECTRICAL SPECIFICATIONS**

Electrical Specification Header		High Band Array (1710-2690 MHz) [Y2]				
Frequency Band	MHz	1710-1880	1850-1990	1920-2170	2300-2400	2490-2690
Gain Typical	dBi	16.7	16.9	17.1	17.1	17.3
Gain Over all Tilts	dBi	16 +/- 0.7	16.6 +/- 0.3	16.7 +/- 0.4	16 +/- 1.1	16.7 +/- 0.6
Azimuth Beamwidth 3dB	Deg	66 +/- 6.8	66.7 +/- 3.6	66 +/- 4.4	69.5 +/- 3.3	64.3 +/- 4.5
Elevation Beamwidth 3dB	Deg	6.7 +/- 0.4	6.3 +/- 0.4	5.9 +/- 0.7	5.2 +/- 0.4	4.7 +/- 0.3
Cross Polar Discrimination at Boresight	dB	20	18.9	19.4	17.2	17.5
Cross Polar Discrimination over Sector	dB	6.4	6.1	6.7	6.9	5.2
F/B at +/-30deg Total Power	dB	19	21.1	22.1	22.9	21.7
First Upper Side Lobe Suppression	dB	17.8	16.8	19.2	15.1	17.9
Electrical Downtilt	Deg	2 to 11				
Cross Polar Isolation	dB	26				
Interband Isolation	dB	26				
VSWR	-	1.5				
Passive Intermodulation (3rd Order, 2 x 43dBm)	dBc	-150				
Maximum Effective Power per Port	Watt	250				

**ELECTRICAL SPECIFICATIONS**

Impedance	Ohm	50
Polarization	Deg	±45°

**MECHANICAL SPECIFICATIONS**

Dimensions - H x W x D	mm (in)	1950 x 350 x 200 (76.8 x 13.8 x 7.9)
Weight (Antenna Only)	kg (lb)	24.5 (54)
Packing size- HxWxD	mm (in)	2200 x 445 x 295 (86.6 x 17.5 x 11.6)
Connector type		6x 4.3-10 female/bottom + 2 AISG connectors (1 male, 1 female)
Radome Material / Color		Fiberglass / Light Grey RAL7035

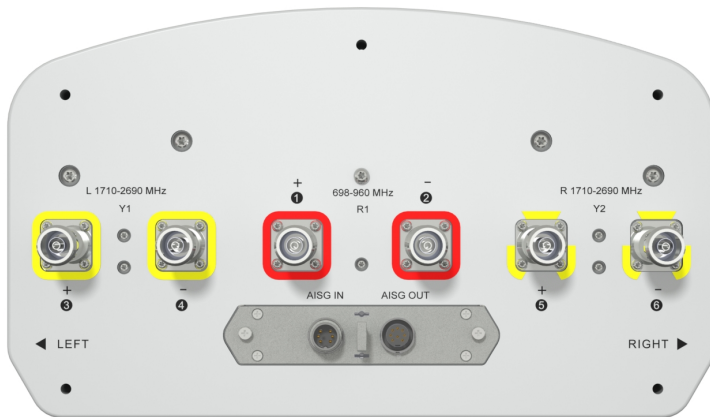
**TESTING AND ENVIRONMENTAL**

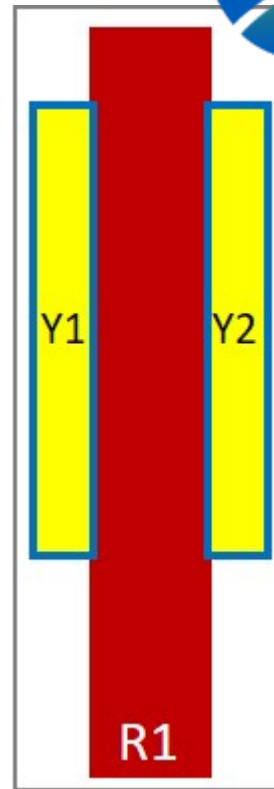
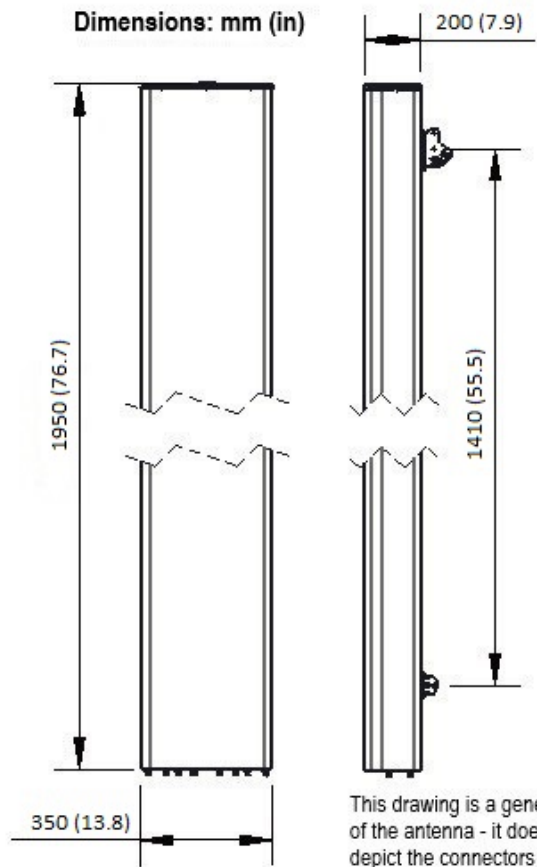
Temperature Range	°C (°F)	-40 to 60 (-40 to 140 )
Lightning protection		DC Ground
Survival/Rated Wind Velocity	km/h	200 (150 )
Wind Load @Rated Wind Front	N	880
Wind Load @Rated Wind Side	N	432
Wind Load @Rated Wind Rear	N	504



**ORDERING INFORMATION**

Order No.	Configuration	Mounting Hardware	Mounting pipe Diameter	Shipping Weight kg(lb)	Mounting Hardware Weight kg(lb)
<b>APXVBLL20B_43-C-I20</b>	Internal RET(ACU-I20-B3)	APM50-B1	50-110mm	33.5 (73.8)	4.5 (9.9)
<b>APXVBLL20B_43-A-I20</b>	Internal RET(ACU-I20-B3)	APM50-B1N (Direct Pipe no tilt)	50-110mm	32.4 (71.4)	3.4 (7.5)





External Document Links

[APM50\\_Series\\_Installation\\_Instructions](#)

Notes

- All electrical parameters are compliant with BASTA NGMN 11.1 requirements.
- For additional mounting information please click "External Document Links".
- **Radiating patterns:** [Request pattern files](#)