

FEATURES / BENEFITS

- 2 ports / 1 cross pol system in very wide high band (1710-2690 MHz)
- Manual VET



Technical features

ELECTRICAL SPECIFICATIONS

Electrical Specification Header		High Band Array (1710-2690 MHz) [Y1]				
Frequency Band	MHz	1710-1880	1850-1990	1920-2170	2300-2400	2490-2690
Gain Typical	dBi	14.9	15.2	15.6	16.1	16.5
Gain Over all Tilts	dBi	14.6 +/- 0.3	15 +/- 0.2	15.2 +/- 0.4	15.9 +/- 0.2	16.1 +/- 0.4
Azimuth Beamwidth 3dB	Deg	71.4 +/- 2.4	69.4 +/- 1.2	67.1 +/- 3.1	62.4 +/- 1.3	63.9 +/- 4.5
Elevation Beamwidth 3dB	Deg	13.8 +/- 0.6	13.1 +/- 0.5	12.4 +/- 0.7	10.8 +/- 0.4	9.7 +/- 0.5
Cross Polar Discrimination at Boresight	dB	16.5	19.1	20.2	20.8	24.4
Cross Polar Discrimination over Sector	dB	17.4	15.1	11.8	8.4	6.7
F/B at +/-30deg Total Power	dB	24.6	22.6	22.8	24.7	22
First Upper Side Lobe Suppression	dB	16.8	19.2	18.8	16.4	13.6
Electrical Downtilt	Deg	2 to 12				
Cross Polar Isolation	dB	26				
VSWR	-	1.5				
Passive Intermodulation (3rd Order, 2 x 43dBm)	dBc	-153				
Maximum Effective Power per Port	Watt	250				

ELECTRICAL SPECIFICATIONS

Impedance	Ohm	50
Polarization	Deg	±45°

MECHANICAL SPECIFICATIONS

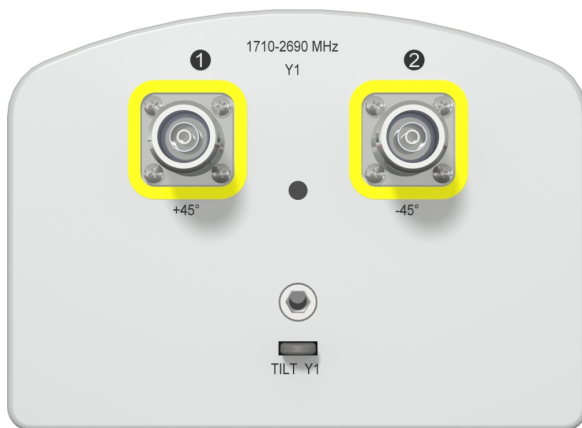
Dimensions - H x W x D	mm (in)	776 x 160 x 115 (30.6 x 6.3 x 4.5)
Weight (Antenna Only)	kg (lb)	5.1 (11.2)
Weight (Mounting Hardware only)	kg (lb)	0.1 (0.22)
Packing size- HxWxD	mm (in)	885 x 255 x 220 (34.8 x 10 x 8.7)
Shipping Weight	kg (lb)	8 (17.6)
Connector type		2 x 4.3-10 female/bottom
Radome Material / Color		Fiberglass / Light Grey RAL7035

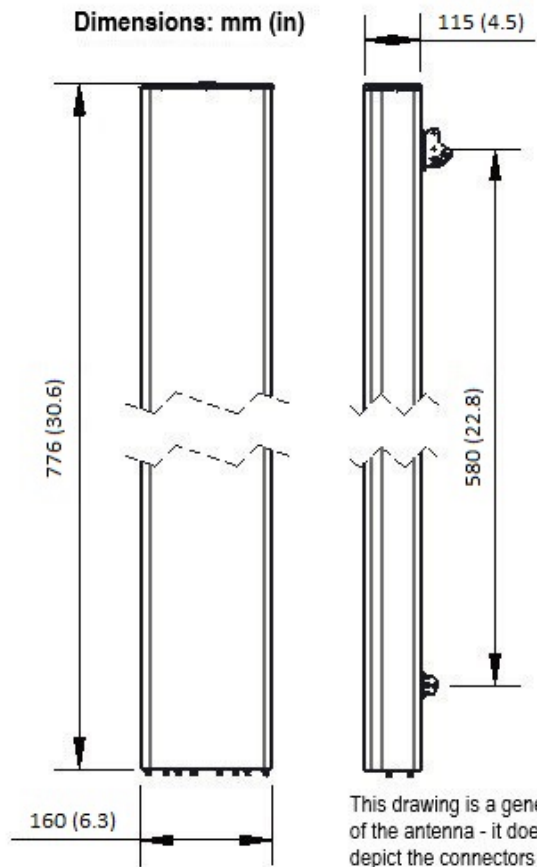
TESTING AND ENVIRONMENTAL

Temperature Range	°C (°F)	-40 to 60 (-40 to 140)
Lightning protection		Direct Ground
Survival/Rated Wind Velocity	km/h	200 (150)
Wind Load @Rated Wind Front	N	157
Wind Load @Rated Wind Side	N	97
Wind Load @Rated Wind Rear	N	239

ORDERING INFORMATION

Order No.	Configuration	Mounting Hardware	Mounting pipe Diameter	Shipping Weight
APXVL08B_43-H	Manual VET	APM50-BH (Hose Clamp)	65-115mm	8.0 Kg





External Document Links
[APM50_Series_Installation_Instructions](#)

Notes

- All electrical parameters are compliant with BASTA NGMN 11.1 requirements.
- For additional mounting information please click "External Document Links".
- **Radiating patterns:** [Request pattern files](#)