



FEATURES / BENEFITS

- 2 ports / 1 cross pol system in very wide high band (1710-2690 MHz)
- Integrated and field replaceable SRET
- ACU HW Version -2.02
- Compliant with AISG V2.0 and 3GPP



Technical features

ELECTRICAL SPECIFICATIONS

Electrical Specification Header		High Band Array (1710-2690 MHz) [Y1]				
Frequency Band	MHz	1710-1880	1850-1990	1920-2170	2300-2400	2490-2690
Gain Typical	dBi	17.2	17.5	17.8	18.2	18.3
Gain Over all Tilts	dBi	16.7 +/- 0.5	17.3 +/- 0.2	17.5 +/- 0.3	17.7 +/- 0.5	17.8 +/- 0.5
Azimuth Beamwidth 3dB	Deg	71.2 +/- 2.5	68.2 +/- 2.5	67.3 +/- 1.9	64.5 +/- 1.9	61.8 +/- 2.5
Elevation Beamwidth 3dB	Deg	7.3 +/- 0.4	6.8 +/- 0.3	6.4 +/- 0.5	5.7 +/- 0.2	5.2 +/- 0.3
Cross Polar Discrimination at Boresight	dB	16.8	19.3	19.2	18.7	21.6
Cross Polar Discrimination over Sector	dB	17.1	14.9	13.2	10.2	6.1
F/B at +/-30deg Total Power	dB	24.6	24	24	23.6	22.6
First Upper Side Lobe Suppression	dB	17.2	20.1	17.1	16.6	14.9
Electrical Downtilt	Deg	2 to 12				
Cross Polar Isolation	dB	28				
VSWR	-	1.5				
Passive Intermodulation (3rd Order, 2 x 43dBm)	dBc	-150				
Maximum Effective Power per Port	Watt	250				

ELECTRICAL SPECIFICATIONS

Impedance	Ohm	50
Polarization	Deg	±45°



MECHANICAL SPECIFICATIONS

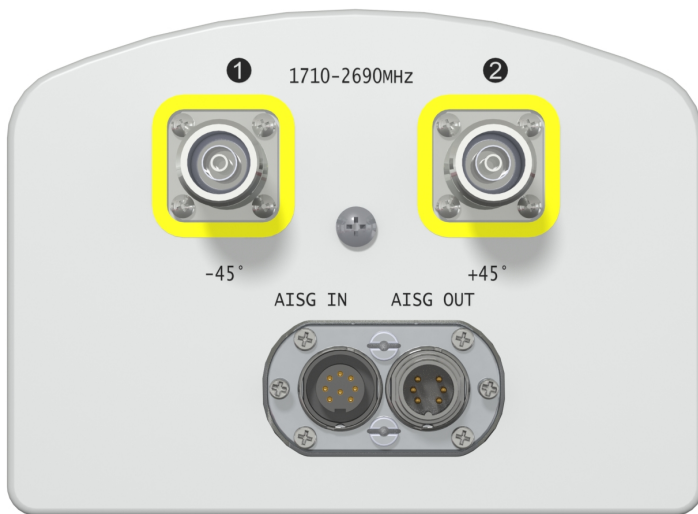
Dimensions - H x W x D	mm (in)	1406 x 160 x 115 (55.4 x 6.3 x 4.5)
Weight (Antenna Only)	kg (lb)	7.5 (16.5)
Weight (Mounting Hardware only)	kg (lb)	2.7 (6)
Packing size- HxWxD	mm (in)	1645 x 285 x 240 (64.8 x 11.2 x 9.4)
Shipping Weight	kg (lb)	12.5 (27.5)
Connector type		2 x 4.3-10 female/bottom + 2 AISG connectors (1 male, 1 female)
Radome Material / Color		Fiberglass / Light Grey RAL7035

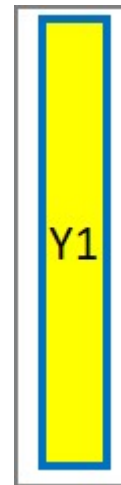
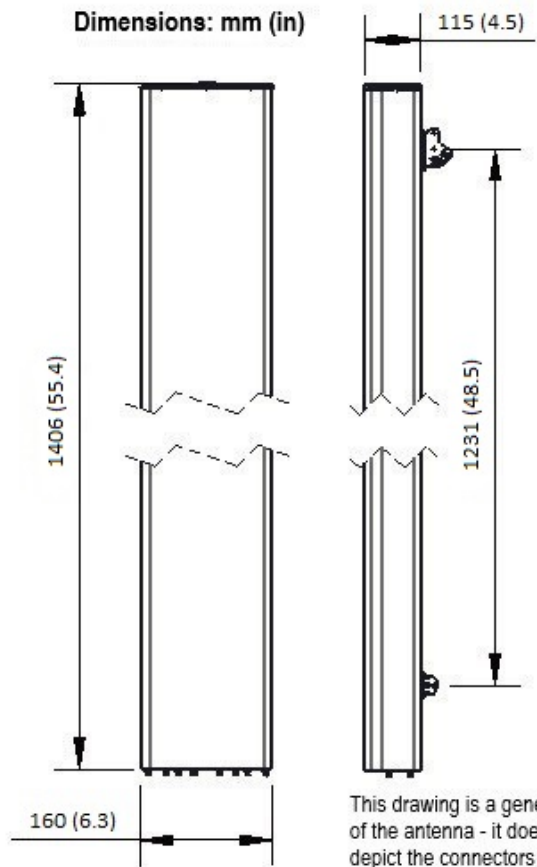
TESTING AND ENVIRONMENTAL

Temperature Range	°C (°F)	-40 to 60 (-40 to 140)
Lightning protection		Direct Ground
Survival/Rated Wind Velocity	km/h	200 (150)
Wind Load @Rated Wind Front	N	250
Wind Load @Rated Wind Side	N	154
Wind Load @Rated Wind Rear	N	270

ORDERING INFORMATION

Order No.	Configuration	Mounting Hardware	Mounting pipe Diameter	Shipping Weight
APXVL14B_43-C-I20	Internal RET (ACU-I20-B1)	APM50-B3	60-110mm	12.5 Kg





[External Document Links](#)
[APM50_Series_Installation_Instructions](#)

Notes

- All electrical parameters are compliant with BASTA NGMN 11.1 requirements.
- For additional mounting information please click "External Document Links".
- **Radiating patterns:** [Request pattern files](#)