

APXVLL14H_43-C-I20, -A-I20

4-Ports, X-Pol, Panel Antenna, 1.4m, 2x 1695-2690MHz, 65deg, Integrated RET



FEATURES / BENEFITS

- 4 ports, 2 cross pol systems in high band (1695-2690MHz)
- Supporting 4x4 MIMO
- Integrated and field replaceable SRET
- ACU HW Version -HRLS200608H1.00
- Optional with Direct Pipe no tilt mounting hardware (Model name Suffix -A-I20)
- Compliant with AISG V2.0 and 3GPP

Technical features

ELECTRICAL SPECIFICATIONS

| Electrical Specification Header | | High Band Array (1695-2690 MHz) [Y1] | | | | |
|--|------|--------------------------------------|--------------|--------------|--------------|--------------|
| | | 1695-1880 | 1850-1990 | 1920-2170 | 2300-2400 | 2490-2690 |
| Frequency Band | MHz | 1695-1880 | 1850-1990 | 1920-2170 | 2300-2400 | 2490-2690 |
| Gain Typical | dBi | 17.2 | 17.7 | 18.3 | 18.4 | 19 |
| Gain Over all Tilts | dBi | 16.7 +/- 0.5 | 17.2 +/- 0.5 | 17.8 +/- 0.5 | 17.9 +/- 0.5 | 18 +/- 1 |
| Azimuth Beamwidth 3dB | Deg | 66.6 +/- 2.1 | 64.5 +/- 1.5 | 63.9 +/- 2 | 64 +/- 2 | 57.1 +/- 2.5 |
| Elevation Beamwidth 3dB | Deg | 7.1 +/- 0.5 | 6.8 +/- 0.5 | 6.2 +/- 0.5 | 5.5 +/- 0.5 | 5.1 +/- 0.1 |
| Cross Polar Discrimination at Boresight | dB | 26 | 25.3 | 24 | 29 | 25 |
| Cross Polar Discrimination over Sector | dB | 11 | 13 | 14 | 9 | 7 |
| F/B at +/-30deg Total Power | dB | 26 | 28 | 28 | 28 | 29 |
| First Upper Side Lobe Suppression | dB | 20 | 21 | 21 | 19.5 | 19 |
| Electrical Downtilt | Deg | 0 to 10 | | | | |
| Cross Polar Isolation | dB | 28 | | | | |
| Interband Isolation | dB | 28 | | | | |
| VSWR | - | 1.5 | | | | |
| Passive Intermodulation (3rd Order, 2 x 43dBm) | dBc | -153 | | | | |
| Maximum Effective Power per Port | Watt | 250 | | | | |



ELECTRICAL SPECIFICATIONS

| Electrical Specification Header | | High Band Array (1695-2690 MHz) [Y2] | | | | |
|--|------|--------------------------------------|--------------|--------------|--------------|--------------|
| Frequency Band | MHz | 1695-1880 | 1850-1990 | 1920-2170 | 2300-2400 | 2490-2690 |
| Gain Typical | dBi | 17.3 | 17.8 | 18.3 | 18.1 | 18.4 |
| Gain Over all Tilts | dBi | 16.8 +/- 0.5 | 17.3 +/- 0.5 | 17.8 +/- 0.5 | 18 +/- 0.1 | 17.9 +/- 0.5 |
| Azimuth Beamwidth 3dB | Deg | 66.4 +/- 3 | 64.1 +/- 2 | 63.6 +/- 2 | 63.5 +/- 1.5 | 57.9 +/- 3 |
| Elevation Beamwidth 3dB | Deg | 7.2 +/- 0.5 | 6.8 +/- 0.5 | 6.1 +/- 0.5 | 5.5 +/- 0.5 | 5 +/- 0.1 |
| Cross Polar Discrimination at Boresight | dB | 24.5 | 26 | 25 | 27.4 | 26 |
| Cross Polar Discrimination over Sector | dB | 11 | 12 | 15 | 9.9 | 8 |
| F/B at +/-30deg Total Power | dB | 26 | 29 | 29.9 | 28 | 27 |
| First Upper Side Lobe Suppression | dB | 20 | 20.8 | 20 | 18.4 | 18 |
| Electrical Downtilt | Deg | 0 to 10 | | | | |
| Cross Polar Isolation | dB | 28 | | | | |
| Interband Isolation | dB | 28 | | | | |
| VSWR | - | 1.5 | | | | |
| Passive Intermodulation (3rd Order, 2 x 43dBm) | dBc | -153 | | | | |
| Maximum Effective Power per Port | Watt | 250 | | | | |

ELECTRICAL SPECIFICATIONS

| | | |
|--------------|-----|------|
| Impedance | Ohm | 50 |
| Polarization | Deg | ±45° |

MECHANICAL SPECIFICATIONS

| | | |
|-------------------------|---------|---|
| Dimensions - H x W x D | mm (in) | 1378 x 258 x 88 (54.3 x 10.2 x 3.5) |
| Weight (Antenna Only) | kg (lb) | 10 (22) |
| Packing size- HxWxD | mm (in) | 1558 x 353 x 208 (61.3 x 13.9 x 8.2) |
| Connector type | | 4 x 4.3-10 female/bottom + 2 AISG connectors (1 male, 1 female) |
| Radome Material / Color | | UPVC / Light Grey RAL7035 |

TESTING AND ENVIRONMENTAL

| | | |
|------------------------------|---------|------------------------|
| Temperature Range | °C (°F) | -40 to 60 (-40 to 140) |
| Lightning protection | | Direct Ground |
| Survival/Rated Wind Velocity | km/h | 200 (150) |
| Wind Load @Rated Wind Front | N | 435 |
| Wind Load @Rated Wind Side | N | 112 |
| Wind Load @Rated Wind Rear | N | 264 |

APXVLL14H_43-C-I20, -A-I20

4-Ports, X-Pol, Panel Antenna, 1.4m, 2x 1695-2690MHz, 65deg, Integrated RET



ORDERING INFORMATION

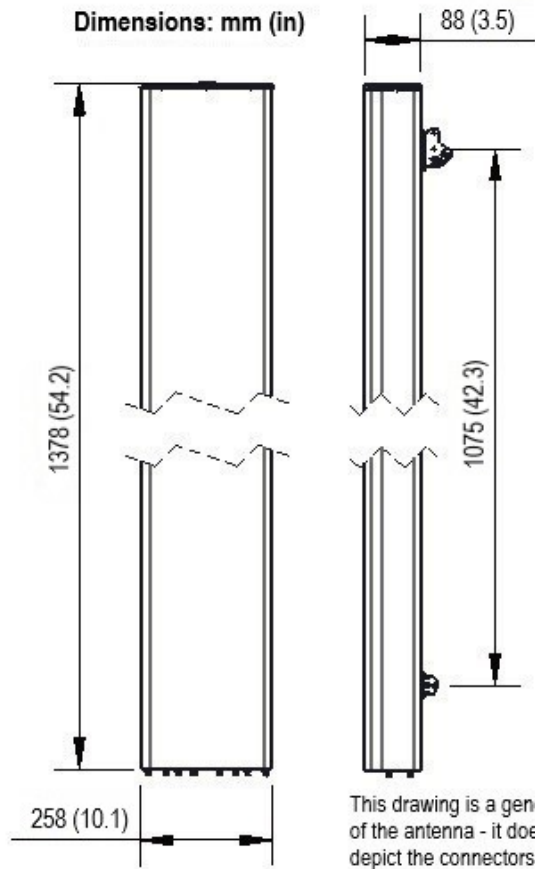
| Order No. | Configuration | Mounting Hardware | Mounting pipe Diameter | Shipping Weight kg(lb) | Mounting Hardware Weight kg(lb) |
|---------------------------|-----------------------------|---------------------------------|------------------------|------------------------|---------------------------------|
| APXVLL14H_43-C-I20 | Internal RET (ACU-I20-H12I) | APM50-H1 | 50-125mm | 16.0 (35.3) | 4.0 (8.8) |
| APXVLL14H_43-A-I20 | Internal RET (ACU-I20-H12I) | APM50-H1N (Direct Pipe no tilt) | 50-125mm | 15.0 (33.1) | 3.0 (6.6) |



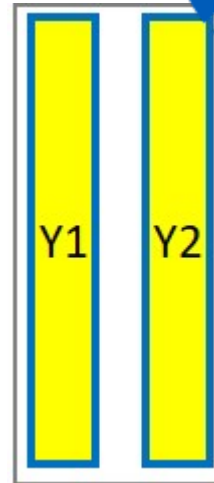
PRODUCT DATASHEET

APXVLL14H_43-C-I20, -A-I20

4-Ports, X-Pol, Panel Antenna, 1.4m, 2x 1695-2690MHz, 65deg, Integrated RET



This drawing is a general representation of the antenna - it does NOT accurately depict the connectors or radome shape.



External Document Links

[APM50_Series_Installation_Instructions](#)

Notes

- All electrical parameters are compliant with BASTA NGMN 11.1 requirements.
- For additional mounting information please click "External Document Links".
- **Radiating patterns:** [Request pattern files](#)