

**FEATURES / BENEFITS**

- Multiple Individual Beam Control (Unit Beam)
- High Powered Beam Option (Broadcast Beam)
- Calibration Port functionality for precise steering performance
- Integrated and field replaceable SRET
- ACU HW Version: 2.02
- Compliant with AISG V2.0 and 3GPP



**Technical features**

**ELECTRICAL SPECIFICATIONS**

Electrical Specification Header		Cal. board and S parameter (2515-2675 MHz) [Y1]
Frequency Band	MHz	2515-2675
Coupling between cal. Port to input port	dB	-26+/-2
Coupling amplitude accuracy	dB	≤ 0.9
Coupling phase accuracy	deg	≤ 7
VSWR	-	≤ 1.5
Maximum Power	Watt	80
ISO co-polor @ 2-6 deg tilt	dB	≥ 19
ISO co-polor @ 7-12 deg tilt	dB	≥ 25
ISO cross-polor @ 2-6 deg tilt	dB	≥ 24
ISO cross-polor @ 7-12 deg tilt	dB	≥ 25

**ELECTRICAL SPECIFICATIONS**

Electrical Specification Header		Radiation Parameter - Unit Beam (2515-2675 MHz) [Y1]
Frequency Band	MHz	2515-2675
Gain Typical	dBi	16.8
Gain Over all Tilts	dBi	16.4 +/- 0.4
Azimuth Beamwidth 3dB	Deg	73.4 +/- 6.3
Elevation Beamwidth 3dB	Deg	5.1 +/- 0.3
Cross Polar Discrimination at Boresight	dB	19.6
Cross Polar Discrimination over Sector	dB	8.6
F/B at +/-30deg Total Power	dB	23.4
First Upper Side Lobe Suppression	dB	17.9
Electrical Downtilt	Deg	2 to 12
VSWR	-	1.5

**ELECTRICAL SPECIFICATIONS**

Electrical Specification Header		Radiation Parameter - Broad casting Beam (2515-2675 MHz) [Y1]
Frequency Band	MHz	2515-2675
Gain Typical	dBi	15.5
Gain Over all Tilts	dBi	14.1 +/- 1.4
Azimuth Beamwidth 3dB	Deg	39.6 +/- 11.7
Elevation Beamwidth 3dB	Deg	5.3 +/- 0.5
F/B at +/-30deg Total Power	dB	24.6
First Upper Side Lobe Suppression	dB	15.7
Electrical Downtilt	Deg	2 to 12
VSWR	-	1.5

**ELECTRICAL SPECIFICATIONS**

Electrical Specification Header		Radiation Parameter - Working Beam (2515-2675 MHz) [Y1]
Frequency Band	MHz	2515-2675
Gain Typical	dBi	21.9
Gain Over all Tilts	dBi	21.1 +/- 0.8
Azimuth Beamwidth 3dB	Deg	30.4 +/- 5.6
Elevation Beamwidth 3dB	Deg	5.1 +/- 0.3
F/B at +/-30deg Total Power	dB	29.5
First Upper Side Lobe Suppression	dB	15.5
Electrical Downtilt	Deg	2 to 12
VSWR	-	1.5

**ELECTRICAL SPECIFICATIONS**

Impedance	Ohm	50
Polarization	Deg	±45°

**MECHANICAL SPECIFICATIONS**

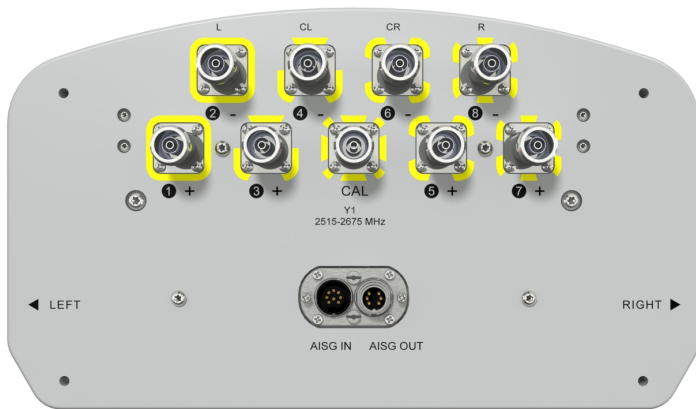
Dimensions - H x W x D	mm (in)	1495 x 350 x 200 (58.9 x 13.8 x 7.9)
Weight (Antenna Only)	kg (lb)	19 (41.9)
Weight (Mounting Hardware only)	kg (lb)	4.5 (9.9)
Packing size- HxWxD	mm (in)	1750 x 445 x 295 (68.9 x 17.5 x 11.6)
Shipping Weight	kg (lb)	28 (61.7)
Connector type		8x N female/bottom + 1 Cal. board Conn. + 2 AISG connectors (1 male, 1 female)
Radome Material / Color		Fiber Glass / Light Grey RAL7035

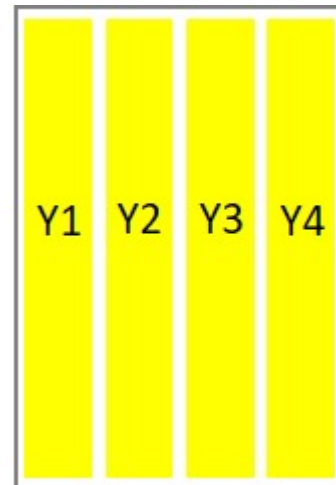
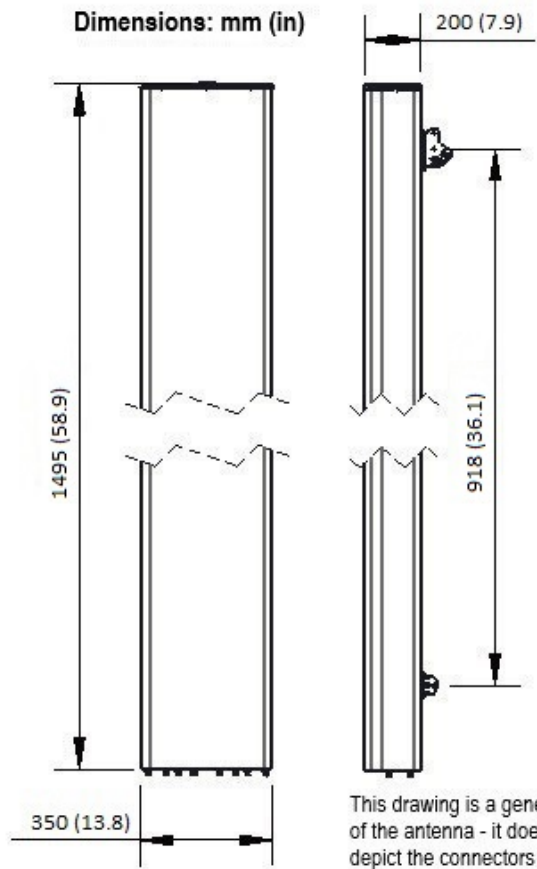
**TESTING AND ENVIRONMENTAL**

Temperature Range	°C (°F)	-40 to 60 (-40 to 140 )
Lightning protection		DC Ground
Survival/Rated Wind Velocity	km/h	200 (150 )
Wind Load @Rated Wind Front	N	597
Wind Load @Rated Wind Side	N	293
Wind Load @Rated Wind Rear	N	672

**ORDERING INFORMATION**

Order No.	Configuration	Mounting Hardware	Mounting pipe Diameter	Shipping Weight
APXVTM14AB_N-C-I20	Internal RET(ACU-I20-B8)	APM50-B1	50-110mm	28.0 kg





External Document Links

[APM50\\_Series\\_Installation\\_Instructions](#)

Notes

- All electrical parameters are compliant with BASTA NGMN 11.1 requirements.
- For additional mounting information please click "External Document Links".
- **Radiating patterns:** [Request pattern files](#)