

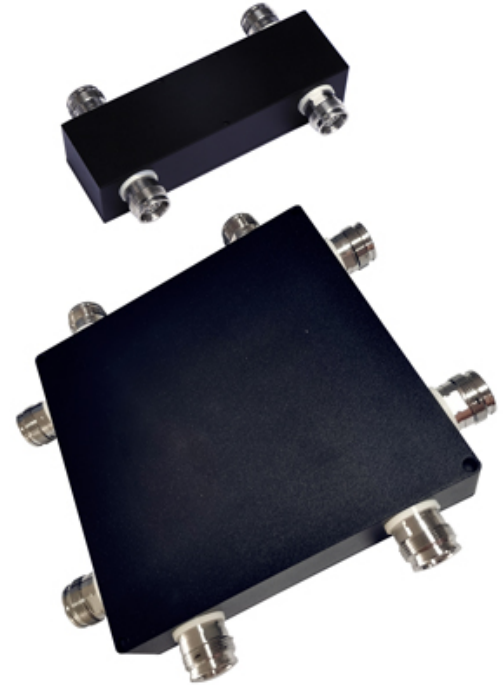


PRODUCT DESCRIPTION

RFS Technologies CDS-Hybrid-E series Hybrid Combiner have been designed for a variety of wireless applications in the frequency band from 555 to 6000MHz. This series contains 2 product types: 2 by 2 and 4 by 4. The 2 by 2 Hybrid Combiner is four-port directional coupler which equally combines two wireless signals and transfers the combined signal to two output ports whilst the 4 by 4 Hybrid Combiner which equally combines four wireless signals and transfers the combined signal to four output ports. The broad frequency range is ideally suited for multi-band distributed antenna systems or in combination with RADIAFLEX® radiating cables.

FEATURES / BENEFITS

- **Broadband 555MHz-6000MHz**
- N-female interfaces
- PIM optimized design (160dBc @ 2x43dBm)
- Ideal for all kind of DAS applications
- Low insertion loss
- High power handling
- Small size, low weight



TECHNICAL FEATURES

ELECTRICAL SPECIFICATIONS

Frequency Range	MHz	555-6000
Power Rating	W	200
PIM 3rd @2*43 dBm	dBc	160
Input Impedance	Ohm	50

MECHANICAL SPECIFICATIONS

Connectors		N Female
Temperature Range	°C	-25 to +65
IP Level		IP66
RoHS		Compliant

**MODEL NUMBER SPECIFICATIONS**

Model Number		CDSE2x2-555/6000	CDSE4x4-555/6000
VSWR		1.25	1.3
Coupling Tolerance	dB	3.1dB ±1.1dB@0.555-0.65GHz 3.1dB ±0.8dB@0.65-6GHz	6.2dB ±1.5dB@0.617-5.95GHz 6.2dB ±2dB@0.555-0.617GHz 6.2dB ±2dB@5.95-6GHz
Isolation	dB	20dB@0.555-2.7GHz 21dB@2.7-6GHz	19dB@0.555-6GHz
Dimensions, L*W*H	mm (in)	145*79*36 (5.71*3.11*1.42)	183*183*32.5 (7.2*7.2*1.28)
Net Weight, ±10%	kg (lb)	0.56(1.23)	1.36(3)

External Document Links[LINK to VEX FILES](#)**Notes**