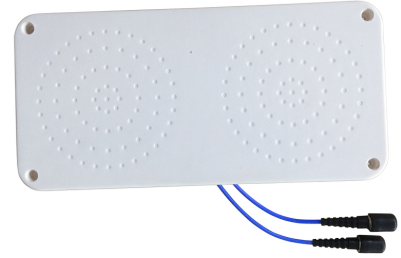




**I-ATO5-43-698/3800M**

Indoor Omnidirectional MIMO Antenna 698-3800 MHz

The omnidirectional MIMO antenna I-ATO5-43-698/3800M is designed for broadband in-building DAS applications supporting all kind of safety as well as 4G and 5G commercial wireless communication networks. The antenna combines an aesthetical design with superior electrical characteristics notably a PIM optimized design to minimize network interferences. The antenna is constructed from lightweight materials ideal for easy ceiling mounting. The low profile and off-white radome blends easily into most building aesthetics with minimum visual impact.



I-ATO5-43-698/3800M

**FEATURES / BENEFITS**

- **Wideband omnidirectional MIMO antenna, supporting all wireless services in the frequency bands 698-960/1427-2700MHz/3400-3800MHz**
- **Typically used in indoor distribution of 2G / 3G / 4G / 5G wireless services in all standardized frequency bands**
- **PIM optimized antenna design (-153dBc @2x20W)**
- **Aesthetical visual appearance, compact and light weight**
- **Low return loss, stable performance**
- **Pigtail with 4.3-10 female connector**
- **Ceiling mounting**

**Technical features**

**GENERAL SPECIFICATIONS**

Product Type		Omnidirectional Antenna
Techn. Application		Indoor

**MECHANICAL SPECIFICATIONS**

Number of Input Ports		2
Connectors		4.3-10 female
Connector Cable	mm (in)	300 (11.8)
Height (Less Connectors)	mm (in)	18 (0.7)
Diameter (Less Connectors)	mm (in)	4.3 ( )
Width (Less Connectors)	mm (in)	140 (5.5)
Length (Less Connectors)	mm (in)	290 (11.4)
Weight	kg (lb)	0.4 (0.18)

**ELECTRICAL SPECIFICATIONS**

Frequenz	MHz	698-960	1427-1710	1710-2700	3400-3800
Gain, typ	dBi	2.5	4.0	4.5	5.0
VSWR		1.8	1.8	1.8	1.8
Impedance, Ohm	Ω	50			
Polarization		2x linear			
Intermodulation (IM3)		-153 dBc (2 x 43dBm)			
Total Input Power max.	W	50			

**MATERIAL**

Radome Material		ABS
Radome Color		White ( RAL 9003 )

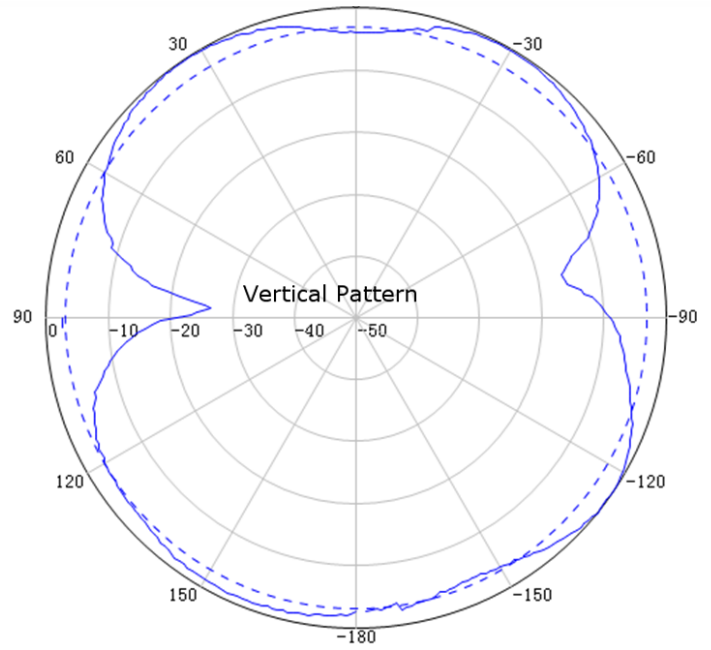
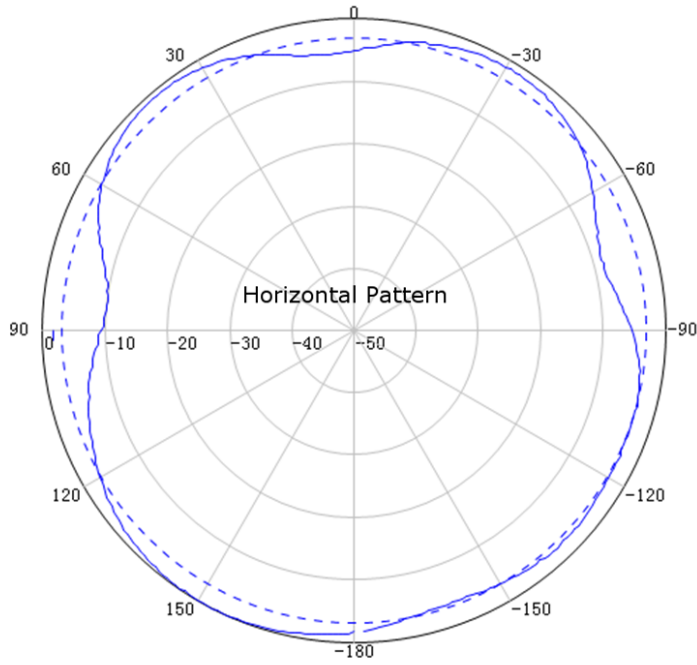


**TEMPERATURE SPECIFICATIONS**

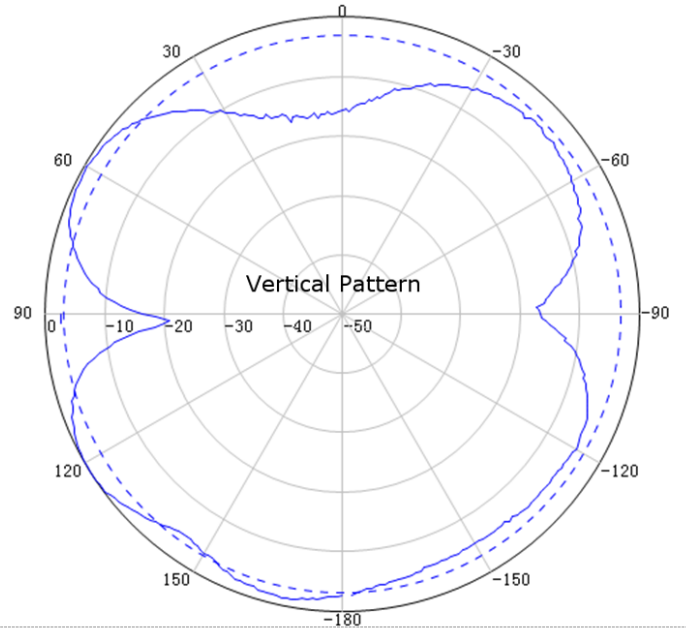
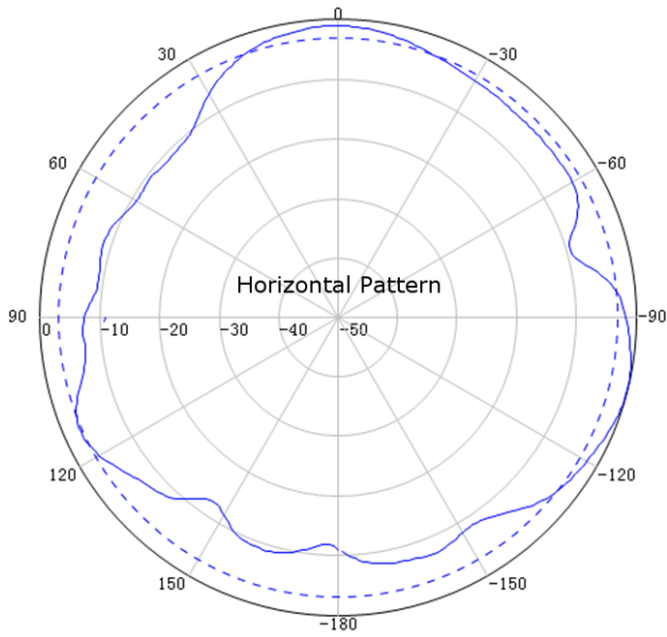
<b>Operation Temperature</b>	°C (°F)	-40 to 55 (-40 to 131 )
------------------------------	---------	-------------------------

**TESTING AND ENVIRONMENTAL**

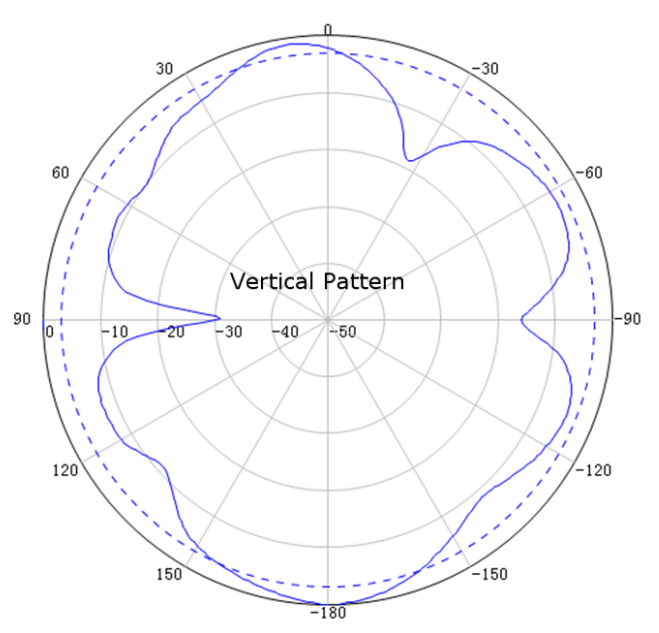
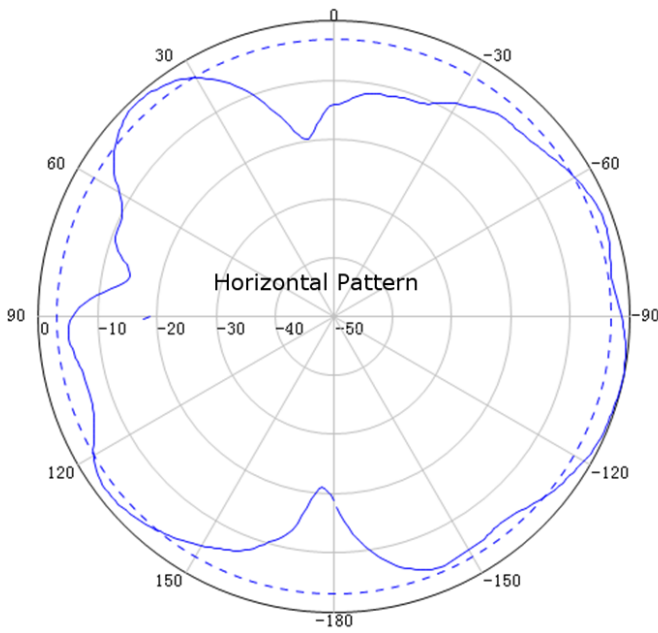
<b>Environmental Class</b>		Indoor
----------------------------	--	--------



800 MHz



1710 MHz



2500 MHz



External Document Links

Notes