

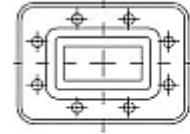


N-Adapter to PDR100, female gasket and screw kit enclosure

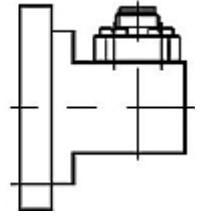
FEATURES / BENEFITS

Waveguide installation

- The rectangular waveguide component provides simple installation in particular difficult cases
- The flange adapter provides proper matching of rectangular waveguide flanges to N-female connector
- It provides outstanding electrical performance



PDR



Technical features

STRUCTURE

Type of Rectangular Waveguide Component		Waveguide to Type N Female Coax Adapter
Waveguide Size IEC (EIA)		R100 (WR90)
Coaxial Interface		N-female
Flange		PDR100
Flange Finish		Brass un-plated

ELECTRICAL SPECIFICATIONS

Frequency Range	GHz	8.2 - 12.5
Minimum Return Loss (max. VSWR)	dB (VSWR)	26.4 (1.10)

MATERIAL

Material		Brass
Color		Black

PACKAGING INFORMATION

Package Quantity		1
------------------	--	---

[External Document Links](#)

[Notes](#)