

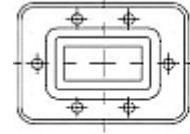


N-Adapter to PDR120, female gasket and screw kit enclosure

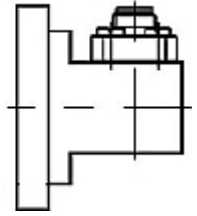
**FEATURES / BENEFITS**

Waveguide installation

- The rectangular waveguide component provides simple installation in particular difficult cases
- The flange adapter provides proper matching of rectangular waveguide flanges to N-female connector
- It provides outstanding electrical performance



PDR



Coax transition for R120 and smaller waveguides

**Technical features**

**STRUCTURE**

Type of Rectangular Waveguide Component		Waveguide to Type N Female Coax Adapter
Waveguide Size IEC (EIA)		R120 (WR75)
Coaxial Interface		N-female
Flange		PDR120
Flange Finish		Brass un-plated

**ELECTRICAL SPECIFICATIONS**

Frequency Range	GHz	9.84 - 15
Minimum Return Loss (max. VSWR)	dB (VSWR)	23.1 (1.15)

**MATERIAL**

Material		Brass
Color		Black

**PACKAGING INFORMATION**

Package Quantity		1
------------------	--	---

External Document Links

Notes