



FEATURES / BENEFITS

- 2 ports / 1 cross pol system in low band (694-960MHz)
- 4 ports / 2 cross pol systems in high band (1427-2690MHz)
- Supporting 4x4 MIMO in high band
- Integrated and field replaceable SRET
- Optional with Direct Pipe no tilt mounting hardware (Model name Suffix -N0N)
- Compliant with AISG V2.0 and 3GPP

Technical features

ELECTRICAL SPECIFICATIONS

Electrical Specification Header		LOW BAND ARRAY (694-960 MHz) [R1]		
Frequency Band	MHz	694-806	790-894	880-960
Gain Typical	dBi	15.4	15.5	15.7
Gain Over all Tilts	dBi	15.0+/-0.4	15.1+/-0.4	15.2+/-0.5
Azimuth Beamwidth 3dB	Deg	69.4+/-2.7	65.9+/-3.3	60.1+/-2.8
Elevation Beamwidth 3dB	Deg	14.6+/-0.8	13.4+/-0.8	12.5+/-0.9
Cross Polar Discrimination at Boresight	dB	14.4	16.5	19.6
F/B at +/-30deg Total Power	dB	24.3	24.6	23.1
First Upper Side Lobe Suppression	dB	14.1	15.0	19.2
Electrical Downtilt	Deg	2 to 12		
Cross Polar Isolation	dB	26		
Interband Isolation	dB	28		
VSWR	-	1.5		
Passive Intermodulation (3rd Order, 2 x 43dBm)	dBc	-153		
Maximum Effective Power per Port	Watt	250		



ELECTRICAL SPECIFICATIONS

Electrical Specification Header		HIGH BAND ARRAY (1427-2690 MHZ) [Y1/Y2]				
Frequency Band	MHz	1427-1518	1695-1880	1920-2170	2300-2400	2490-2690
Gain Typical	dBi	17.3	18.2	18.7	18.7	18.3
Gain Over all Tilts	dBi	16.8+/-0.5	17.6+/-0.6	18.1+/-0.6	18.0+/-0.7	17.7+/-0.6
Azimuth Beamwidth 3dB	Deg	61.8+/-2.8	62.5+/-6.5	59.7+/-2.6	62.7+/-1.4	65.3+/-6.9
Elevation Beamwidth 3dB	Deg	7.6+/-0.4	6.6+/-0.5	5.8+/-0.4	5.4+/-0.3	5.1+/-0.3
Cross Polar Discrimination at Boresight	dB	28.0	23.2	23.6	23.3	24.3
F/B at +/-30deg Total Power	dB	26.8	23.0	22.7	22.5	23.1
First Upper Side Lobe Suppression	dB	14.6	14.6	15.5	17.7	15.8
Electrical Downtilt	Deg	2 to 12				
Cross Polar Isolation	dB	26				
Interband Isolation	dB	28				
VSWR	-	1.5				
Passive Intermodulation (3rd Order, 2 x 43dBm)	dBc	-153				
Maximum Effective Power per Port	Watt	200				

ELECTRICAL SPECIFICATIONS

Impedance	Ohm	50
Polarization	Deg	±45°

MECHANICAL SPECIFICATIONS

Dimensions - H x W x D	mm (in)	1498 x 378 x 158 (59 x 14.9 x 6.2)
Weight (Antenna Only)	kg (lb)	16.9 (37.2)
Packing size- HxWxD	mm (in)	1678 x 473 x 278 (66.1 x 18.6 x 10.9)
Connector type		6x 4.3-10 female/bottom + 2x AISG connectors (1 male, 1 female)
Radome Material / Color		Fiberglass / Light Gray

TESTING AND ENVIRONMENTAL

Temperature Range	°C (°F)	-40 to 60 (-40 to 140)
Lightning protection		DC Ground
Survival/Rated Wind Velocity	km/h	200 (150)
Wind Load @Rated Wind Front	N	381
Wind Load @Rated Wind Side	N	317
Wind Load @Rated Wind Rear	N	452

P1-BUU15-N0, -N0N

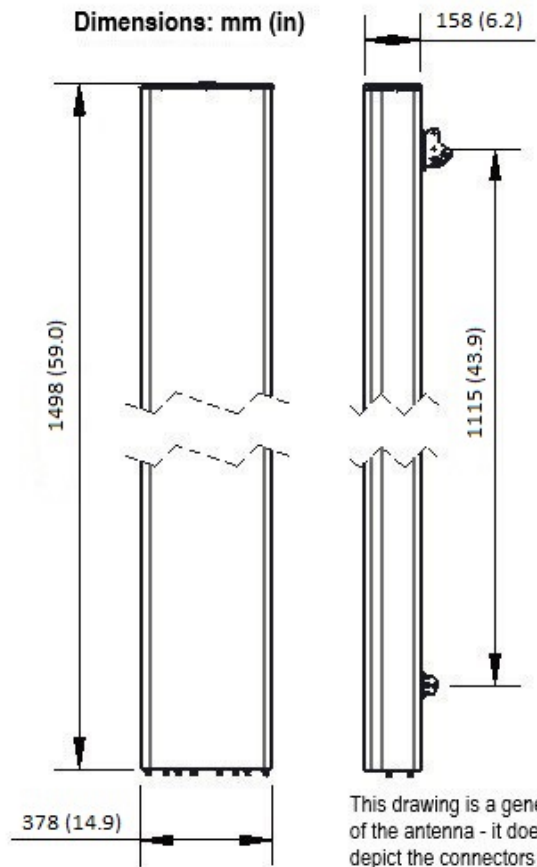
6-Ports, X-Pol, Panel Antenna, 1.5m, 1x 694-960/2x 1427-2690MHz, 65deg, Integrated RET



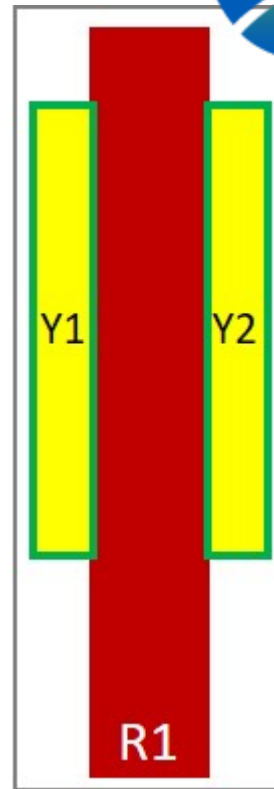
ORDERING INFORMATION

Order No.	Configuration	Mounting Hardware	Mounting pipe Diameter	Shipping Weight kg(lb)	Mounting Hardware Weight kg(lb)
P1-BUU15-N0	Internal RET (ACU-I20-H12I)	APM50-H1	50-125 mm	24.5 (54.0)	4.0 (8.8)
P1-BUU15-N0N	Internal RET (ACU-I20-H12I)	APM50-H1N (Direct Pipe no tilt)	50-125 mm	23.5 (51.8)	3.0 (6.6)





This drawing is a general representation of the antenna - it does NOT accurately depict the connectors or radome shape.



External Document Links

[APM50_Series_Installation_Instructions](#)

Notes

- All electrical parameters are compliant with BASTA NGMN 11.1 requirements.
- For additional mounting information please click "External Document Links".
- This datasheet is provisional and subject to changes.
- **Radiating patterns:** [Request pattern files](#)