

P1-BUU26-N0

6-Ports, X-Pol, Panel Antenna, 2.6m, 1x 694-960/2x 1427-2690MHz, 65deg, Integrated RET



FEATURES / BENEFITS

- 2 ports / 1 cross pol system in low band (694-960MHz)
- 4 ports / 2 cross pol systems in high band (1427-2690MHz)
- Supporting 4x4 MIMO in high band
- Integrated and field replaceable SRET
- ACU HW Version: HRLS200608H1.00
- Compliant with AISG V2.0 and 3GPP

Technical features

ELECTRICAL SPECIFICATIONS

Electrical Specification Header		LOW BAND ARRAY (694-960 MHz) [R1]		
Frequency Band	MHz	694-806	790-894	880-960
Gain Typical	dBi	16.7	16.9	17
Gain Over all Tilts	dBi	16.1 +/- 0.6	16.6 +/- 0.3	16.7 +/- 0.3
Azimuth Beamwidth 3dB	Deg	65.1 +/- 1.9	62 +/- 2.4	60.6 +/- 1.6
Elevation Beamwidth 3dB	Deg	8.7 +/- 0.6	7.7 +/- 0.6	7.1 +/- 0.3
Cross Polar Discrimination at Boresight	dB	21.8	24.5	24.9
Cross Polar Discrimination over Sector	dB	10.6	9.5	7
F/B at +/-30deg Total Power	dB	27.2	26.4	24.5
First Upper Side Lobe Suppression	dB	15.3	16.8	15.7
Electrical Downtilt	Deg	2 to 12		
Cross Polar Isolation	dB	26		
Interband Isolation	dB	25		
VSWR	-	1.5		
Passive Intermodulation (3rd Order, 2 x 43dBm)	dBc	-153		
Maximum Effective Power per Port	Watt	250		

P1-BUU26-N0

6-Ports, X-Pol, Panel Antenna, 2.6m, 1x 694-960/2x 1427-2690MHz, 65deg, Integrated RET



ELECTRICAL SPECIFICATIONS

Electrical Specification Header		HIGH BAND ARRAY (1427-2690 MHz) [Y1]				
Frequency Band	MHz	1427-1518	1695-1880	1920-2170	2300-2400	2490-2690
Gain Typical	dBi	16	17.2	17.8	17.6	17.5
Gain Over all Tilts	dBi	15.5 +/- 0.5	16.1 +/- 1.1	17.1 +/- 0.7	16.7 +/- 0.9	16.8 +/- 0.7
Azimuth Beamwidth 3dB	Deg	74.9 +/- 8	62.8 +/- 4.8	60.6 +/- 4.2	64.1 +/- 1.5	61.2 +/- 3.5
Elevation Beamwidth 3dB	Deg	7.7 +/- 0.4	6.2 +/- 0.7	5.5 +/- 0.5	4.9 +/- 0.3	4.6 +/- 0.3
Cross Polar Discrimination at Boresight	dB	29.5	24.8	22.6	22.8	23.1
Cross Polar Discrimination over Sector	dB	12	13.8	8.2	4.5	1.4
F/B at +/-30deg Total Power	dB	26.8	26	26.2	24.8	23
First Upper Side Lobe Suppression	dB	15.1	15.5	13.6	13.8	13.2
Electrical Downtilt	Deg	2 to 12				
Cross Polar Isolation	dB	26				
Interband Isolation	dB	25				
VSWR	-	1.5				
Passive Intermodulation (3rd Order, 2 x 43dBm)	dBc	-153				
Maximum Effective Power per Port	Watt	200				

P1-BUU26-N0

6-Ports, X-Pol, Panel Antenna, 2.6m, 1x 694-960/2x 1427-2690MHz, 65deg, Integrated RET



ELECTRICAL SPECIFICATIONS

Electrical Specification Header		HIGH BAND ARRAY (1427-2690 MHz) [Y2]				
Frequency Band	MHz	1427-1518	1695-1880	1920-2170	2300-2400	2490-2690
Gain Typical	dBi	16.1	17.2	17.8	17.5	17.7
Gain Over all Tilts	dBi	15.5 +/- 0.6	16.4 +/- 0.8	17.3 +/- 0.5	17 +/- 0.5	17.3 +/- 0.4
Azimuth Beamwidth 3dB	Deg	76.5 +/- 8	61.4 +/- 7.2	61 +/- 3.1	62.6 +/- 1.6	58.4 +/- 4
Elevation Beamwidth 3dB	Deg	7.6 +/- 0.4	6.2 +/- 0.5	5.5 +/- 0.5	4.9 +/- 0.3	4.5 +/- 0.3
Cross Polar Discrimination at Boresight	dB	25.2	22.9	22.9	25.9	27
Cross Polar Discrimination over Sector	dB	11.3	14.2	7.3	3.6	1.2
F/B at +/-30deg Total Power	dB	23.6	24.8	25.1	24.9	24.9
First Upper Side Lobe Suppression	dB	14.6	14.7	16.4	15.1	15.2
Electrical Downtilt	Deg	2 to 12				
Cross Polar Isolation	dB	26				
Interband Isolation	dB	25				
VSWR	-	1.5				
Passive Intermodulation (3rd Order, 2 x 43dBm)	dBc	-153				
Maximum Effective Power per Port	Watt	200				

ELECTRICAL SPECIFICATIONS

Impedance	Ohm	50
Polarization	Deg	±45°

MECHANICAL SPECIFICATIONS

Dimensions - H x W x D	mm (in)	2498 x 378 x 158 (98.3 x 14.9 x 6.2)
Weight (Antenna Only)	kg (lb)	28.2 (62.2)
Weight (Mounting Hardware only)	kg (lb)	5.5 (12.1)
Packing size- HxWxD	mm (in)	2698 x 473 x 278 (106.2 x 18.6 x 10.9)
Shipping Weight	kg (lb)	39.1 (86.2)
Connector type		6x 4.3-10 female/bottom + 2 AISG connectors (1 male, 1 female)
Radome Material / Color		Fiberglass / Light Gray

TESTING AND ENVIRONMENTAL

Temperature Range	°C (°F)	-40 to 60 (-40 to 140)
Lightning protection		DC Ground
Survival/Rated Wind Velocity	km/h	200 (150)
Wind Load @Rated Wind Front	N	616
Wind Load @Rated Wind Side	N	551
Wind Load @Rated Wind Rear	N	714

P1-BUU26-N0

6-Ports, X-Pol, Panel Antenna, 2.6m, 1x 694-960/2x 1427-2690MHz, 65deg, Integrated RET



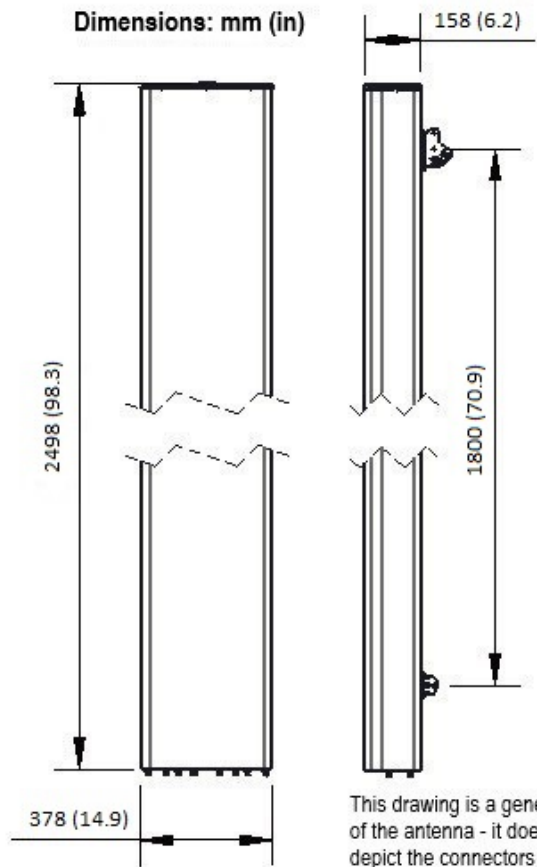
ORDERING INFORMATION

Order No.	Configuration	Mounting Hardware	Mounting pipe Diameter	Shipping Weight
P1-BUU26-N0	Internal RET (ACU-I20-H13)	APM50-H2	50-125 mm	39.1 kg

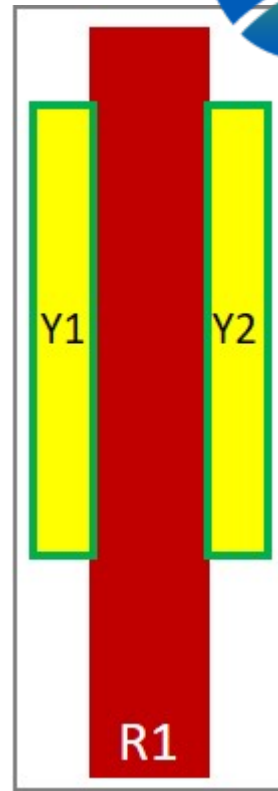


P1-BUU26-N0

6-Ports, X-Pol, Panel Antenna, 2.6m, 1x 694-960/2x 1427-2690MHz, 65deg, Integrated RET



This drawing is a general representation of the antenna - it does NOT accurately depict the connectors or radome shape.



External Document Links
[APM50_Series_Installation_Instructions](#)

- Notes
- All electrical parameters are compliant with BASTA NGMN 11.1 requirements.
 - For additional mounting information please click "External Document Links".
 - **Radiating patterns:** [Request pattern files](#)