

PRODUCT DATASHEET

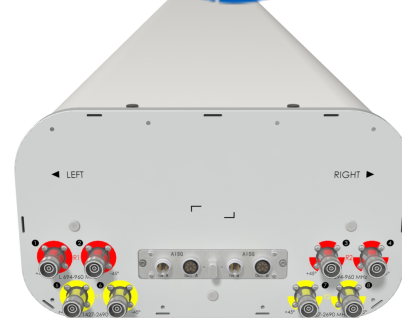
P2-BBUU26-J0, -J0N, -I0, -I0N

8-Ports, X-Pol, Panel Antenna, 2.6m, 2x 694-960/2x 1427-2690MHz, 65deg, Integrated RET, Site Sharing Optional



FEATURES / BENEFITS

- 4 ports / 2 cross pol systems in low band (694-960 MHz)
- 4 ports / 2 cross pol systems in very wide high band (1427-2690 MHz)
- Integrated and field replaceable SRET
- Optional with Site Sharing feature (Model name Suffix -I0, -I0N)
- Optional with Direct Pipe no tilt mounting hardware (Model name Suffix -J0N, -I0N)
- Compliant with AISG V2.0 and 3GPP
- Optimized radome for low windload.



Technical features

ELECTRICAL SPECIFICATIONS

Electrical Specification Header		Low Band Arrays (694-960MHz)[R1]		
Frequency Band	MHz	694-806	790-894	880-960
Gain Typical	dBi	15.7	16.0	16.6
Gain Over all Tilts	dBi	15.1 +/- 0.6	15.5 +/- 0.5	16.1 +/- 0.5
Azimuth Beamwidth 3dB	Deg	67.3 +/- 8.9	63.9 +/- 7.0	55.8 +/- 5.2
Elevation Beamwidth 3dB	Deg	8.7 +/- 0.7	7.9 +/- 0.5	7.3 +/- 0.4
Cross Polar Discrimination at Boresight	dB	20.8	21.0	22.9
Cross Polar Discrimination over Sector	dB	10.5	9.5	8.6
F/B at +/-30deg Total Power	dB	19.5	22.4	22.8
First Upper Side Lobe Suppression	dB	17.2	19.0	17.2
Electrical Downtilt	Deg	2 to 12		
Cross Polar Isolation	dB	25		
Interband Isolation	dB	25		
VSWR	-	1.5		
Passive Intermodulation (3rd Order, 2 x 43dBm)	dBc	-153		
Maximum Effective Power per Port	Watt	300		

P2-BBUU26-J0, -J0N, -I0, -I0N

8-Ports, X-Pol, Panel Antenna, 2.6m, 2x 694-960/2x 1427-2690MHz, 65deg, Integrated RET, Site Sharing Optional



ELECTRICAL SPECIFICATIONS

Electrical Specification Header		Low Band Arrays (694-960MHz)[R2]		
Frequency Band	MHz	694-806	790-894	880-960
Gain Typical	dBi	15.5	16.1	16.6
Gain Over all Tilts	dBi	15.1 +/- 0.4	15.6 +/- 0.5	16.2 +/- 0.4
Azimuth Beamwidth 3dB	Deg	68.6 +/- 9.5	64.3 +/- 7.5	55.9 +/- 5.4
Elevation Beamwidth 3dB	Deg	8.7 +/- 0.6	8.0 +/- 0.5	7.3 +/- 0.4
Cross Polar Discrimination at Boresight	dB	19.5	20.8	21.5
Cross Polar Discrimination over Sector	dB	11.0	10.0	8.4
F/B at +/-30deg Total Power	dB	19.6	22.8	23.1
First Upper Side Lobe Suppression	dB	17.8	20.2	19.7
Electrical Downtilt	Deg	2 to 12		
Cross Polar Isolation	dB	25		
Interband Isolation	dB	25		
VSWR	-	1.5		
Passive Intermodulation (3rd Order, 2 x 43dBm)	dBc	-153		
Maximum Effective Power per Port	Watt	300		

P2-BBUU26-J0, -J0N, -I0, -I0N

8-Ports, X-Pol, Panel Antenna, 2.6m, 2x 694-960/2x 1427-2690MHz, 65deg, Integrated RET, Site Sharing Optional



ELECTRICAL SPECIFICATIONS

Electrical Specification Header		High Band Arrays (1427-2690MHz)[Y1]				
Frequency Band	MHz	1427-1518	1695-1880	1920-2170	2300-2400	2490-2690
Gain Typical	dBi	15.9	16.9	18.3	18.5	18.6
Gain Over all Tilts	dBi	15.3 +/- 0.6	16.1 +/- 0.8	17.3 +/- 1.0	18.0 +/- 0.5	18.0 +/- 0.6
Azimuth Beamwidth 3dB	Deg	63.1 +/- 5.4	62.1 +/- 6.0	60.8 +/- 6.4	52.3 +/- 2.2	53.1 +/- 5.6
Elevation Beamwidth 3dB	Deg	8.9 +/- 0.8	7.8 +/- 0.8	6.8 +/- 0.7	5.7 +/- 0.4	5.3 +/- 0.4
Cross Polar Discrimination at Boresight	dB	15.5	16.8	15.1	15.1	18.9
Cross Polar Discrimination over Sector	dB	8.3	4.5	4.8	1.1	1.0
F/B at +/-30deg Total Power	dB	23.4	22.8	24.0	22.7	20.3
First Upper Side Lobe Suppression	dB	14.8	14.4	15.0	18.0	17.5
Electrical Downtilt	Deg	2 to 12				
Cross Polar Isolation	dB	25				
Interband Isolation	dB	25				
VSWR	-	1.5				
Passive Intermodulation (3rd Order, 2 x 43dBm)	dBc	-153				
Maximum Effective Power per Port	Watt	250				

P2-BBUU26-J0, -J0N, -I0, -I0N

8-Ports, X-Pol, Panel Antenna, 2.6m, 2x 694-960/2x 1427-2690MHz, 65deg, Integrated RET, Site Sharing Optional



ELECTRICAL SPECIFICATIONS

Electrical Specification Header		High Band Arrays (1427-2690MHz)[Y2]				
Frequency Band	MHz	1427-1518	1695-1880	1920-2170	2300-2400	2490-2690
Gain Typical	dBi	15.9	17.1	18.3	18.5	18.6
Gain Over all Tilts	dBi	15.4 +/- 0.5	16.0 +/- 1.1	17.4 +/- 0.9	17.9 +/- 0.6	18.0 +/- 0.6
Azimuth Beamwidth 3dB	Deg	64.7 +/- 4.5	65.7 +/- 5.5	59.7 +/- 5.8	52.9 +/- 3.4	52.6 +/- 6.2
Elevation Beamwidth 3dB	Deg	9.1 +/- 0.7	7.8 +/- 0.7	6.7 +/- 0.6	5.6 +/- 0.4	5.4 +/- 0.5
Cross Polar Discrimination at Boresight	dB	15.2	14.3	17.1	15.6	20.2
Cross Polar Discrimination over Sector	dB	9.1	4.9	3.3	1.2	0.4
F/B at +/-30deg Total Power	dB	22.0	22.2	23.2	24.2	22.1
First Upper Side Lobe Suppression	dB	15.6	15.7	15.2	17.8	18.6
Electrical Downtilt	Deg	2 to 12				
Cross Polar Isolation	dB	25				
Interband Isolation	dB	25				
VSWR	-	1.5				
Passive Intermodulation (3rd Order, 2 x 43dBm)	dBc	-153				
Maximum Effective Power per Port	Watt	250				

ELECTRICAL SPECIFICATIONS

Impedance	Ohm	50
Polarization	Deg	±45°

MECHANICAL SPECIFICATIONS

Dimensions - H x W x D	mm (in)	2749 x 369 x 206 (108.2 x 14.5 x 8.1)
Weight (Antenna Only)	kg (lb)	37.3 (82.2)
Packing size- HxWxD	mm (in)	2982 x 442 x 340 (117.4 x 17.4 x 13.4)
Connector type		8x 4.3-10 Female Connectors + 2x AISG ports (1 male, 1 female), (Site Sharing) 4x AISG ports (2 male, 2 female)
Radome Material / Color		Fiberglass / Light Grey RAL7035

TESTING AND ENVIRONMENTAL

Temperature Range	°C (°F)	-40 to 60 (-40 to 140)
Grounding type		Direct Ground
Survival/Rated Wind Velocity	km/h	220 (150)
Wind Load @Rated Wind Front	N	487
Wind Load @Rated Wind Side	N	604
Wind Load @Rated Wind Rear	N	618

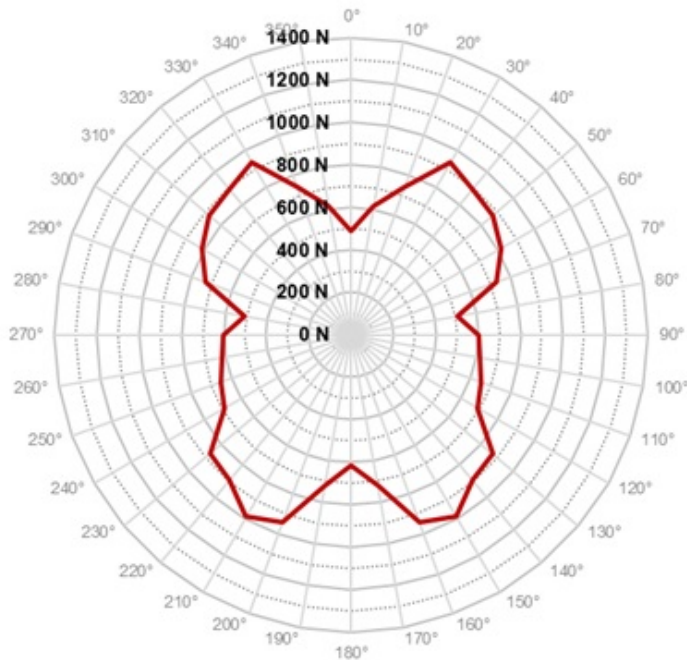
P2-BBUU26-J0, -J0N, -I0, -I0N

8-Ports, X-Pol, Panel Antenna, 2.6m, 2x 694-960/2x 1427-2690MHz, 65deg, Integrated RET, Site Sharing Optional



ORDERING INFORMATION

Order No.	Configuration	Mounting Hardware	Mounting Pipe Diameter	Shipping Weight kg(lb)	Mounting Hardware Weight kg(lb)
P2-BBUU26-J0	Internal RET (ACU-X20N)	APM40-2	60-120mm	47.3 (104.3)	3.9 (8.6)
P2-BBUU26-J0N	Internal RET (ACU-X20N)	APM40-1 (Direct Pipe no tilt)	60-120mm	46.6 (102.7)	3.2 (7.0)
P2-BBUU26-I0	Internal Site Sharing RET (ACU-X20)	APM40-2	60-120mm	47.3 (104.3)	3.9 (8.6)
P2-BBUU26-I0N	Internal Site Sharing RET (ACU-X20)	APM40-1 (Direct Pipe no tilt)	60-120mm	46.6 (102.7)	3.2 (7.0)



Rated Wind Speed, Km/h	150
Wind Load Frontal, Resultant, N	487
Wind Load Side, Resultant, N	604
Wind Load Rear, Resultant, N	618
Maximum Wind Load, Resultant, N	990

PRODUCT DATASHEET

P2-BBUU26-J0, -J0N, -I0, -I0N

8-Ports, X-Pol, Panel Antenna, 2.6m, 2x 694-960/2x 1427-2690MHz, 65deg, Integrated RET, Site Sharing Optional

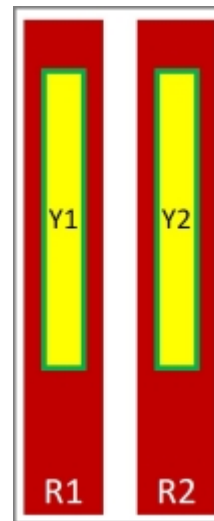
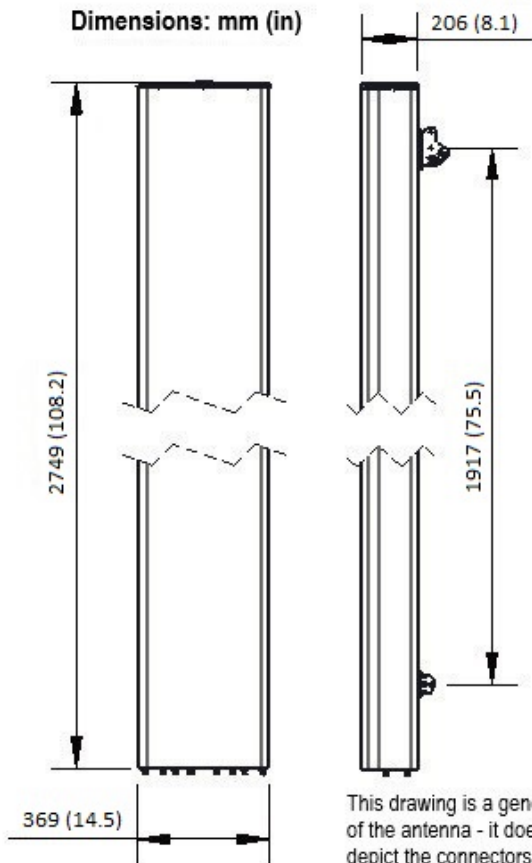


Port	Array	Frequency	RET	AISG RET UID
1	R1	694-960 MHz	R1	RFxxxxxxxxxxx-R1
2				
3	R2	694-960 MHz	R2	RFxxxxxxxxxxx-R2
4				
5	Y1	1427-2690 MHz	Y1	RFxxxxxxxxxxx-Y1
6				
7	Y2	1427-2690 MHz	Y2	RFxxxxxxxxxxx-Y2
8				

NOTE: RET motors will tilt one at a time, not simultaneously



Dimensions: mm (in)



External Document Links
[APM40_Series_Installation_Instructions](#)

Notes

PRODUCT DATASHEET

P2-BBUU26-J0, -J0N, -I0, -I0N

8-Ports, X-Pol, Panel Antenna, 2.6m, 2x 694-960/2x 1427-2690MHz, 65deg, Integrated RET,
Site Sharing Optional



- All electrical parameters are compliant with NGMN P-BASTA 12 requirements.
- For additional mounting information please click "External Document Links".
- This datasheet is provisional and subject to changes.
- **Radiating patterns:** [Request pattern files](#)