

PH-ZZ07-N0

4-Ports, X-Pol, Panel Antenna, 0.7m, 2x 4720-4920MHz, 65deg, Integrated RET



FEATURES / BENEFITS

- 4 ports / 2 cross pol systems in high band (4720-4920MHz)
- Integrated and field replaceable SRET
- ACU HW Version: 2.02
- Compliant with AISG V2.0 and 3GPP

Technical features

ELECTRICAL SPECIFICATIONS

Electrical Specification Header		HIGH BAND ARRAY (4720-4920 MHz) [P1]	
Frequency Band	MHz	4720 - 4820	4820 - 4920
Gain Typical	dBi	17.5	17.5
Gain Over all Tilts	dBi	16.9+/-0.6	16.9+/-0.6
Azimuth Beamwidth 3dB	Deg	66 +/- 4.7	67.2 +/- 5.6
Elevation Beamwidth 3dB	Deg	5.6 +/- 0.3	5.6 +/- 0.4
Cross Polar Discrimination at Boresight	dB	10.4	9.6
Cross Polar Discrimination over Sector	dB	6.1	6.1
F/B at +/-30deg Total Power	dB	18.7	17.6
First Upper Side Lobe Suppression	dB	15.1	14.7
Electrical Downtilt	Deg	2 to 12	
Cross Polar Isolation	dB	26	
Interband Isolation	dB	26	
VSWR	-	1.5	
Maximum Effective Power per Port	Watt	150	



ELECTRICAL SPECIFICATIONS

Electrical Specification Header		HIGH BAND ARRAY (4720-4920 MHZ) [P2]	
Frequency Band	MHz	4720 - 4820	4820 - 4920
Gain Typical	dBi	17.6	17.7
Gain Over all Tilts	dBi	17.1 +/- 0.5	17.1 +/- 0.6
Azimuth Beamwidth 3dB	Deg	67 +/- 5.1	68.2 +/- 8.1
Elevation Beamwidth 3dB	Deg	5.6 +/- 0.4	5.6 +/- 0.4
Cross Polar Discrimination at Boresight	dB	10.7	9.8
Cross Polar Discrimination over Sector	dB	7.1	4.7
F/B at +/-30deg Total Power	dB	18.5	18.7
First Upper Side Lobe Suppression	dB	15.2	16.5
Electrical Downtilt	Deg	2 to 12	
Cross Polar Isolation	dB	26	
Interband Isolation	dB	26	
VSWR	-	1.5	
Maximum Effective Power per Port	Watt	150	

ELECTRICAL SPECIFICATIONS

Impedance	Ohm	50
Polarization	Deg	±45°

MECHANICAL SPECIFICATIONS

Dimensions - H x W x D	mm (in)	798 x 260 x 130 (31.42 x 10.24 x 5.12)
Weight (Antenna Only)	kg (lb)	7 (15.4)
Weight (Mounting Hardware only)	kg (lb)	2.7 (6)
Packing size- HxWxD	mm (in)	1015 x 360 x 215 (40 x 14.2 x 8.5)
Shipping Weight	kg (lb)	11.5 (25.4)
Connector type		4 x 4.3-10 Female at bottom + 2 AISG connectors (1 male, 1 female)
Radome Material / Color		UPVC / Light Grey RAL7035

TESTING AND ENVIRONMENTAL

Temperature Range	°C (°F)	-40 to 60 (-40 to 140)
Lightning protection		Direct Ground
Survival/Rated Wind Velocity	km/h	200 (150)
Wind Load @Rated Wind Front	N	121
Wind Load @Rated Wind Side	N	125
Wind Load @Rated Wind Rear	N	144

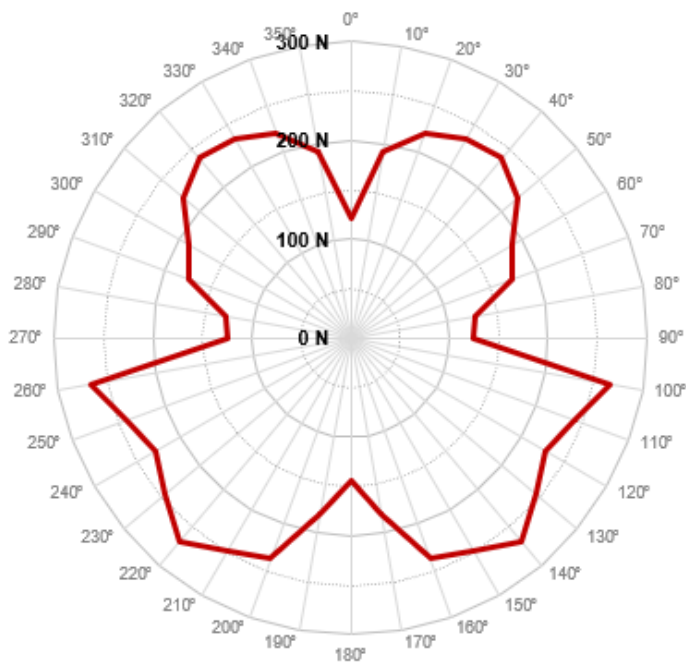
PH-ZZ07-N0

4-Ports, X-Pol, Panel Antenna, 0.7m, 2x 4720-4920MHz, 65deg, Integrated RET



ORDERING INFORMATION

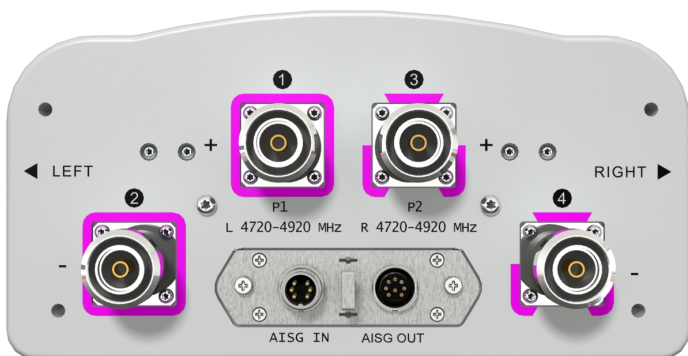
Order No.	Configuration	Mounting Hardware	Mounting pipe Diameter	Shipping Weight
PH-ZZ07-N0 Material code:50016654	Internal RET (ACU-I20-B2)	APM50-B3	60-110mm	11.5 kg



Rated Wind Speed, Km/h	150
Wind Load Frontal, Resultant, N	121
Wind Load Side, Resultant, N	125
Wind Load Rear, Resultant, N	144
Maximum Wind Load, Resultant, N	269
Maximum Wind Load, Drag Force, N	235

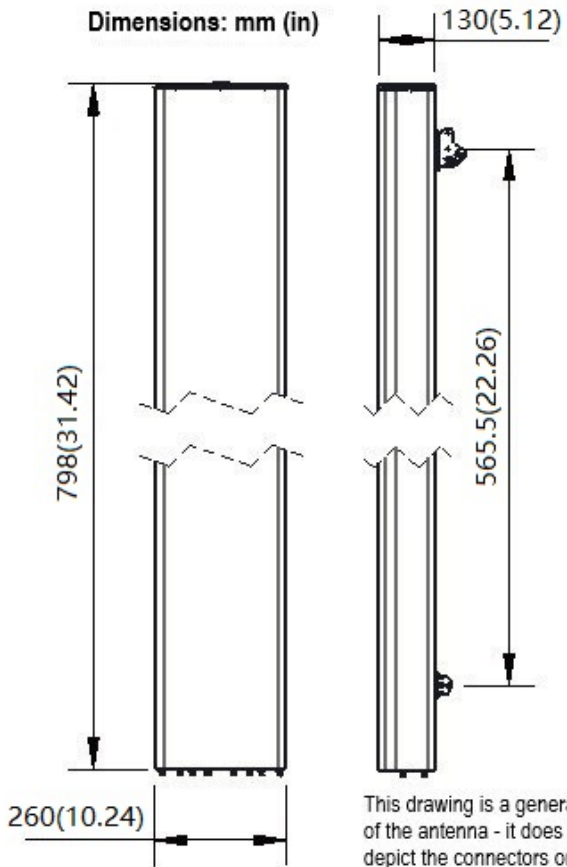
Port	Array	Frequency	RET	AISG RET UID
1	P1	4720-4920 MHz	P1	RFxxxxxxxxxx-P1
2				
3	P2	4720-4920 MHz	P2	RFxxxxxxxxxx-P2
4				

NOTE: RET motors will tilt one at a time, not simultaneously



PH-ZZ07-N0

4-Ports, X-Pol, Panel Antenna, 0.7m, 2x 4720-4920MHz, 65deg, Integrated RET



External Document Links
[APM50_Series_Installation_Instructions](#)

- Notes
- All electrical parameters are compliant with BASTA NGMN 12 requirements.
 - For additional mounting information please click "External Document Links".
 - **Radiating patterns:** [Request pattern files](#)