



Clamp lining for SCF12 cable (usable in combination with RSB-12)

**FEATURES / BENEFITS**

The clamp lining has been designed to be used in combination with the RSB-Clip RSB-12. The use of the clamp lining in combination with RSB-Clip prevents SCF12-50 Jumper cables against damage e.g. due to cable movement by wind, therefore a deterioration of the electrical properties is avoided.



**Technical features**

**GENERAL SPECIFICATIONS**

<b>Product Line</b>		Coaxial Cable Accessories Hybrid Cable Accessories
<b>Product Type</b>		Clamp Lining
<b>Transmission Line Type</b>		SCF12
<b>Cable Type</b>		Superflexible Coaxial Foam Dielectric
<b>Color</b>		Black

**MECHANICAL SPECIFICATIONS**

<b>Cable Size</b>		1/2
<b>Number of Cable / Waveguide Runs</b>		1
<b>Material</b>		Material: EPDM UV resistant

**ACCESSORIES**

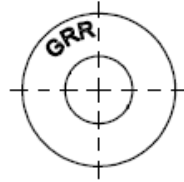
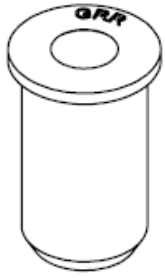
<b>Spare Part / Useful Accessories</b>		RSB-Cleat : RSB-12 Cleat : RSB-310 Anchor bar fixation : RSB-315
--	--	--

**TEMPERATURE SPECIFICATIONS**

<b>Operation Temperature</b>	°C (°F)	-50 to 85 (-58 to 185 )
------------------------------	---------	-------------------------

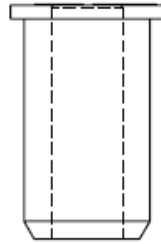
**PACKAGING INFORMATION**

<b>Package Quantity</b>		10
<b>Weight per piece</b>	kg (lb)	0.009 (0.02)
<b>Weight per kit</b>	kg (lb)	0.09 (0.198)



$\varnothing D=15-16\text{mm}$

$\varnothing d=12-14\text{mm}$



Technical Drawing

**External Document Links**

[Installation Instruction for Jumper with RSB-S12/12](#)

**Notes**

Only usable in combination with RSB-12