

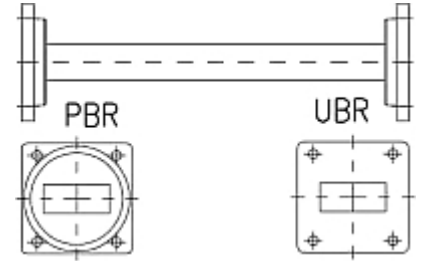


Rectangular Waveguide R 120 Straight Section,
flanges PBR/UBR 120, f= 9.84-12.50 GHz,
VSWR max 1.05, A=100mm (3.9in),
gasket and screw kit enclosure
made of brass

FEATURES / BENEFITS

Waveguide installation

- The rectangular waveguide component provides simple installation in particular difficult cases
- It can be installed where less space is available
- It provides outstanding electrical performance



Technical features

STRUCTURE

Type of Rectangular Waveguide Component		Straight Section
Waveguide Size IEC (EIA)		R120 (WR75)
Flange A		PBR120
Flange B		UBR120
Flange Finish		Brass un-plated
Package Quantity		1

ELECTRICAL SPECIFICATIONS

Minimum Return Loss (max. VSWR)	dB (VSWR)	32.3 (1.05)
---------------------------------	-----------	-------------

MECHANICAL SPECIFICATIONS

Length	mm (in)	100 (3.9)
--------	---------	-----------

MATERIAL

Material		Brass
Color		Black

[External Document Links](#)

[Notes](#)