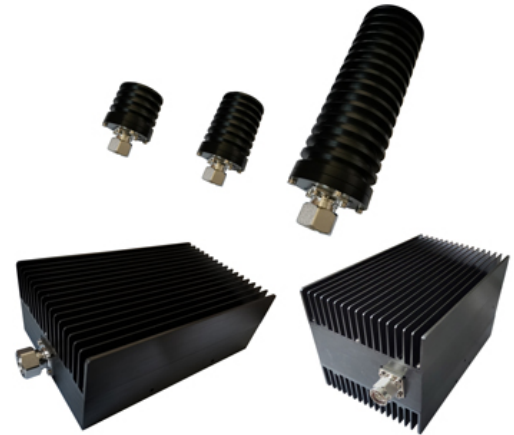




PRODUCT DESCRIPTION

RFS Technologies TERP-43 series Low PIM Loads have been designed for a variety of wireless applications in the frequency band from 350 to 6000MHz with excellent PIM value. The products are ideally suited for termination of unused ports in distributed antenna systems or in RADIAFLEX® radiating cables systems. The loads feature an outstanding PIM performance to avoid interferences in 3G / 4G / 5G communication systems.



FEATURES / BENEFITS

- Broadband 350MHz-6000MHz
- 4.3-10 Male Interface
- PIM Optimized Design (163dBc @2x43dBm)
- Low VSWR

TECHNICAL FEATURES

ELECTRICAL SPECIFICATIONS

Frequency Range	MHz	350-6000
VSWR		1.22:1@350-2700MHz, 1.3:1@2701-6000MHz
PIM 3rd @2*43 dBm	dBc	163
Input Impedance	Ohm	50

MECHANICAL SPECIFICATIONS

Connectors		4.3-10 Male
Temperature Range	°C	-25 to +50
IP Level		IP65
RoHS		Compliant

MODEL NUMBER SPECIFICATIONS

Model Number		TERP-43-6000-2W	TERP-43-6000-5W	TERP-43-6000-10W	TERP-43-6000-20W
Average Power	Watts	2	5	10	20
Dimensions, L*W*H	mm (in)	50*78 (1.97*3.07)	50*98 (1.97*3.86)	44*141 (1.73*5.55)	54*170 (2.13*6.69)
Net Weight ±10%	kg(lb)	0.255(0.56)	0.41(0.9)	0.525(1.16)	0.725(1.6)

MODEL NUMBER SPECIFICATIONS

Model Number		TERP-43-6000-50W	TERP-43-6000-100W	TERP-43-6000-200W
Average Power	Watts	50	100	200
Dimensions, L*W*H	mm (in)	173*60*74 (6.81*2.36*2.91)	233*130*75 (9.17*5.12*2.95)	233*130*126 (9.17*5.12*4.96)
Net Weight ±10%	kg(lb)	1.255(2.77)	2.32(5.11)	4.19(9.24)



PRODUCT DATASHEET

TERP-43-6000-10W

Broadband Low PIM Load for Wireless & Indoor Application, Support 350-6000MHz, 10W

External Document Links

[LINK to VEX FILES](#)

Notes