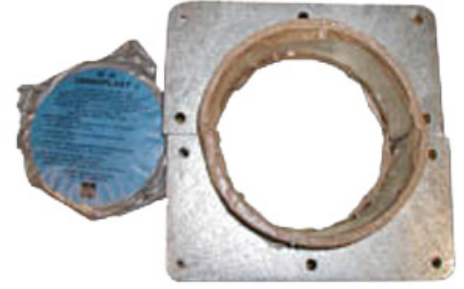




These innovative Wall feed through system feature a design which reduces installation time. Each WF-Kit contains a rubber wall gland which fit inside the mounting plate to hold the coax in place, butyl sealing compound and a tension clamp with two bolts.

[FEATURES / BENEFITS](#)



[External Document Links](#)

[Notes](#)

[Installation Instruction](#)

Technical features

STRUCTURE

Product Line		Coaxial Cable Accessories
Product Type		Wall/Roof Feed-Through System
Feed-Through Component		Single Entry Kit
Transmission Line Type		HCA495
Coaxial Cable Type		Air Dielectric
Cable Size		5"

MECHANICAL SPECIFICATIONS

Feed-Through Holes		1
Feed-Through Hole Diameter	mm (in)	128 (5.06)
Mated to Cable Size and Interface		5

PACKAGING INFORMATION

Package Quantity		1
-------------------------	--	---