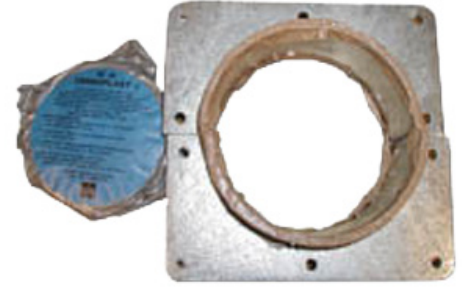




These innovative Wall feed through system feature a design which reduces installation time. Each WF-Kit contains a rubber wall gland which fit inside the mounting plate to hold the coax in place, butyl sealing compound and a tension clamp with two bolts.

[FEATURES / BENEFITS](#)



[External Document Links](#)

[Notes](#)

[Installation Instruction](#)

## Technical features

### STRUCTURE

<b>Product Line</b>		Coaxial Cable Accessories
<b>Product Type</b>		Wall/Roof Feed-Through System
<b>Feed-Through Component</b>		Single Entry Kit
<b>Transmission Line Type</b>		HCA550
<b>Coaxial Cable Type</b>		Air Dielectric
<b>Cable Size</b>		5-1/2"

### MECHANICAL SPECIFICATIONS

<b>Feed-Through Holes</b>		1
<b>Feed-Through Hole Diameter</b>	mm (in)	160 (6.32)
<b>Mated to Cable Size and Interface</b>		5-1/2

### PACKAGING INFORMATION

<b>Package Quantity</b>		1
-------------------------	--	---