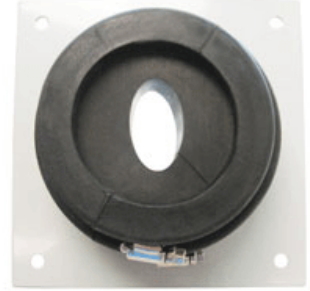




Molded rubber insert wall/roof feed through. Seals elliptical waveguide at building entrance.  
Aluminum split fastening ring.

[FEATURES / BENEFITS](#)



[External Document Links](#)

[Notes](#)

## Technical features

### STRUCTURE

<b>Product Line</b>		Elliptical Waveguide Accessories
<b>Product Type</b>		Wall/Roof Feed-Through System
<b>Feed-Through Component</b>		Single Entry Kit
<b>Transmission Line Type</b>		E65, EP65

### MECHANICAL SPECIFICATIONS

<b>Feed-Through Holes</b>		1
---------------------------	--	---

### PACKAGING INFORMATION

<b>Package Quantity</b>		1
-------------------------	--	---