

**APXV3B26B\_43-C-I20, -A-I20**

Dual Slant Polarized Single Band 2 Port Antenna, 698-960MHz, 33deg, 20.9dBi, 2.6m, 2-12deg, Integrated RET



**FEATURES / BENEFITS**

- 2 ports / 1 cross pol system in low band (698-960MHz), 33deg.
- Integrated and field replaceable SRET
- ACU HW Version -2.02
- Optional with Direct Pipe no tilt mounting hardware (Model name Suffix -A-I20)
- Compliant with AISG V2.0 and 3GPP



**Technical features**

**ELECTRICAL SPECIFICATIONS**

Electrical Specification Header		Low Band Array (698-960 MHz) [R1]		
Frequency Band	MHz	698-806	790-894	880-960
Gain Typical	dBi	19.2	19.7	20.9
Gain Over all Tilts	dBi	18.7 +/- 0.5	19.2 +/- 0.5	19.9 +/- 1
Azimuth Beamwidth 3dB	Deg	36.9 +/- 3	32.8 +/- 2	31.6 +/- 0.5
Elevation Beamwidth 3dB	Deg	8.7 +/- 0.5	7.9 +/- 0.5	7.1 +/- 0.5
Cross Polar Discrimination at Boresight	dB	26	23.5	23
Cross Polar Discrimination over Sector	dB	6	8	9
F/B at +/-30deg Total Power	dB	26	26	26
First Upper Side Lobe Suppression	dB	20	18	18
Electrical Downtilt	Deg	2 to 12		
Cross Polar Isolation	dB	27		
VSWR	-	1.5		
Passive Intermodulation (3rd Order, 2 x 43dBm)	dBc	-150		
Maximum Effective Power per Port	Watt	350		

**ELECTRICAL SPECIFICATIONS**

Impedance	Ohm	50
Polarization	Deg	±45°

**APXV3B26B\_43-C-I20, -A-I20**

Dual Slant Polarized Single Band 2 Port Antenna, 698-960MHz, 33deg, 20.9dBi, 2.6m, 2-12deg, Integrated RET



**MECHANICAL SPECIFICATIONS**

<b>Dimensions - H x W x D</b>	mm (in)	2535 x 585 x 155 (99.8 x 23 x 6.1)
<b>Weight (Antenna Only)</b>	kg (lb)	39 (68.8)
<b>Packing size- HxWxD</b>	mm (in)	2800 x 680 x 250 (110.2 x 26.8 x 9.8)
<b>Connector type</b>		2x 4.3-10 female/bottom + 2 AISG connectors (1 male, 1 female)
<b>Radome Material / Color</b>		Fiberglass / Light Grey RAL7035

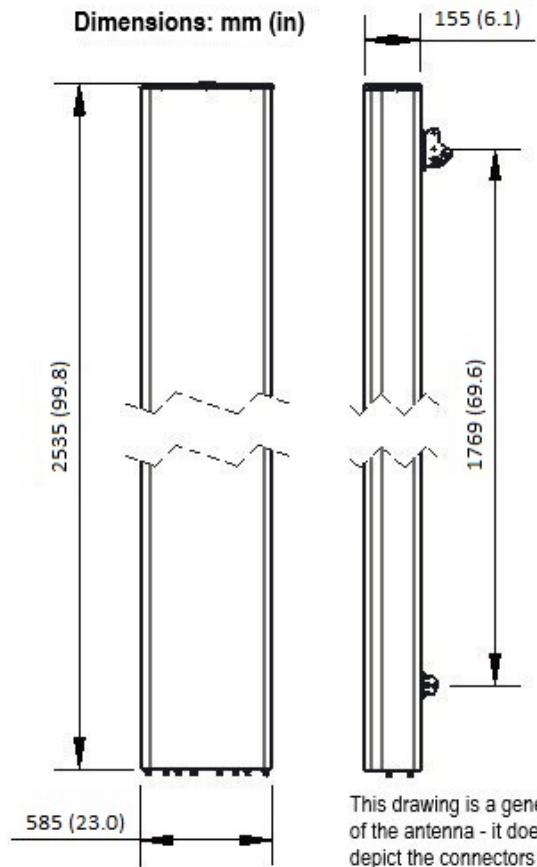
**TESTING AND ENVIRONMENTAL**

<b>Temperature Range</b>	°C (°F)	-40 to 60 (-40 to 140)
<b>Lightning protection</b>		Direct Ground
<b>Survival/Rated Wind Velocity</b>	km/h	200 (150)
<b>Wind Load @Rated Wind Front</b>	N	1594
<b>Wind Load @Rated Wind Side</b>	N	659
<b>Wind Load @Rated Wind Rear</b>	N	1068

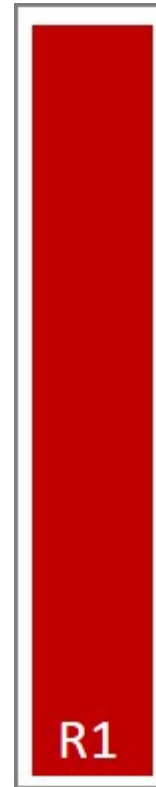
**ORDERING INFORMATION**

Order No.	Configuration	Mounting Hardware	Mounting Pipe Diameter	Shipping Weight kg(lb)	Mounting Hardware Weight kg(lb)
APXV3B26B_43-C-I20	Internal RET (ACU-I20-B1)	APM50-B2	60-110mm	50.0 (110.2)	4.5 (9.9)
APXV3B26B_43-A-I20	Internal RET (ACU-I20-B1)	APM50-B2N (Direct Pipe no tilt)	60-110mm	48.9 (107.8)	3.4 (7.5)





This drawing is a general representation of the antenna - it does NOT accurately depict the connectors or radome shape.



External Document Links  
[APM50\\_Series\\_Installation\\_Instructions](#)

Notes

- All electrical parameters are compliant with BASTA NGMN 11.1 requirements.
- For additional mounting information please click "External Document Links".
- **Radiating patterns:** [Request pattern files](#)