

APXVB26B-C-I20

Single Band, 2-port Antenna, 2.6m, 698-960 MHz, 65deg, 17.7 dBi, 2-12deg, Integrated RET



FEATURES / BENEFITS

- 2 ports / 1 cross pol system in low band (698-960MHz)
- Integrated and field replaceable SRET
- ACU HW Version -2.02 / SW Version -2.72
- Compliant with AISG V2.0 and 3GPP

Technical features

ELECTRICAL SPECIFICATIONS

Electrical Specification Header		LOW BAND ARRAY (698-960) [R1]		
Frequency Band	MHz	698 - 806	790 - 894	880 - 960
Gain Typical	dBi	16.9	17.1	17.7
Gain Over all Tilts	dBi	16.4 +/- 0.5	17 +/- 0.1	17.2 +/- 0.5
Azimuth Beamwidth 3dB	Deg	68.7 +/- 1.5	66.5 +/- 2	63.4 +/- 1.5
Elevation Beamwidth 3dB	Deg	8.8 +/- 1	8 +/- 0.7	7.1 +/- 0.5
Cross Polar Discrimination at Boresight	dB	25	24	27
Cross Polar Discrimination over Sector	dB	13	11.4	10
F/B at +/-30deg Total Power	dB	24	26	25.8
First Upper Side Lobe Suppression	dB	19.3	18	17
Electrical Downtilt	Deg	2 to 12		
Cross Polar Isolation	dB	28		
VSWR	-	1.5		
Passive Intermodulation (3rd Order, 2 x 43dBm)	dBc	-153		
Maximum Effective Power per Port	Watt	350		

ELECTRICAL SPECIFICATIONS

Impedance	Ohm	50
Polarization	Deg	±45°

APXVB26B-C-I20

Single Band, 2-port Antenna, 2.6m, 698-960 MHz, 65deg, 17.7 dBi, 2-12deg, Integrated RET



MECHANICAL SPECIFICATIONS

Dimensions - H x W x D	mm (in)	2550 x 320 x 140 (100.4 x 12.6 x 5.5)
Weight (Antenna Only)	kg (lb)	28.5 (62.8)
Weight (Mounting Hardware only)	kg (lb)	4.5 (9.9)
Packing size- HxWxD	mm (in)	2820 x 395 x 215 (111 x 15.6 x 8.5)
Shipping Weight	kg (lb)	38.5 (84.9)
Connector type		2 x 7/16 female/bottom + 2 AISG connectors (1 male, 1 female)
Radome Material / Color		Fiberglass / Light Grey RAL7035

TESTING AND ENVIRONMENTAL

Temperature Range	°C (°F)	-40 to 60 (-40 to 140)
Lightning protection		Direct Ground
Survival/Rated Wind Velocity	km/h	200 (150)
Wind Load @Rated Wind Front	N	785
Wind Load @Rated Wind Side	N	1122
Wind Load @Rated Wind Rear	N	1275

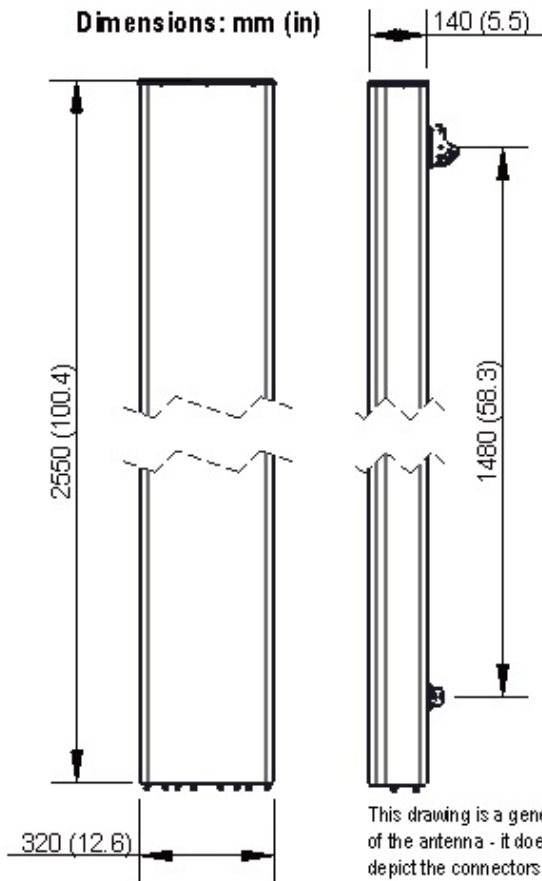
ORDERING INFORMATION

Order No.	Configuration	Mounting Hardware	Mounting pipe Diameter	Shipping Weight
APXVB26B-C-I20	Internal RET (ACU-I20-B1)	APM50-B1	50-110mm	38.5 kg

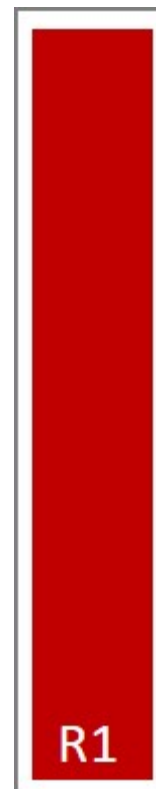


APXVB26B-C-I20

Single Band, 2-port Antenna, 2.6m, 698-960 MHz, 65deg, 17.7 dBi, 2-12deg, Integrated RET



This drawing is a general representation of the antenna - it does NOT accurately depict the connectors or radome shape.



External Document Links
[APM50_Series_Installation_Instructions](#)

Notes

- All electrical parameters are compliant with BASTA NGMN 11.1 requirements.
- For additional mounting information please click "External Document Links".

• **Radiating patterns:** [Request pattern files](#)