

**APXVBB20B\_43-C-I20, -A-I20**

4-Ports, X-Pol, Panel Antenna, 2.0m, 2x 698-960MHz, 65deg, Integrated RET



**FEATURES / BENEFITS**

- 4 ports / 2 cross pol systems in low band (698-960MHz)
- Supporting 4x4 MIMO
- Integrated and field replaceable SRET
- ACU HW Version: 2.02
- Optional with Direct Pipe no tilt mounting hardware (Model name Suffix -A-I20)
- Compliant with AISG V2.0 and 3GPP

**Technical features**

**ELECTRICAL SPECIFICATIONS**

Electrical Specification Header		LOW BAND ARRAY (698-960 MHz) [R1]		
Frequency Band	MHz	698 - 806	790 - 894	880 - 960
Gain Typical	dBi	15.7	15.8	16.2
Gain Over all Tilts	dBi	14.8+/-0.9	15.4+/-0.4	15.8+/-0.4
Azimuth Beamwidth 3dB	Deg	73.5+/-5.9	69.4+/-2.1	64.9+/-1.4
Elevation Beamwidth 3dB	Deg	10.7+/-1.1	9.8+/-0.4	9.0+/-0.5
Cross Polar Discrimination at Boresight	dB	25.7	26.5	27.7
Cross Polar Discrimination over Sector	dB	12.7	9.8	5.6
F/B at +/-30deg Total Power	dB	21.9	22.7	23.1
First Upper Side Lobe Suppression	dB	17.1	16.3	14.9
Electrical Downtilt	Deg	2 to 12		
Cross Polar Isolation	dB	26		
Interband Isolation	dB	26		
VSWR	-	1.5		
Passive Intermodulation (3rd Order, 2 x 43dBm)	dBc	-150		
Maximum Effective Power per Port	Watt	350		



**ELECTRICAL SPECIFICATIONS**

Electrical Specification Header		LOW BAND ARRAY (698-960 MHz) [R2]		
Frequency Band	MHz	698 - 806	790 - 894	880 - 960
Gain Typical	dBi	15.7	15.8	16.1
Gain Over all Tilts	dBi	14.9+/-0.8	15.5+/-0.3	15.8+/-0.3
Azimuth Beamwidth 3dB	Deg	74.1+/-5.8	69.5+/-2.5	64.7+/-1.3
Elevation Beamwidth 3dB	Deg	10.7+/-1.0	9.8+/-0.4	9.0+/-0.4
Cross Polar Discrimination at Boresight	dB	24.0	24.8	28.7
Cross Polar Discrimination over Sector	dB	11.6	9.1	6.1
F/B at +/-30deg Total Power	dB	21.3	23.1	22.3
First Upper Side Lobe Suppression	dB	16.9	16.3	15.4
Electrical Downtilt	Deg	2 to 12		
Cross Polar Isolation	dB	26		
Interband Isolation	dB	26		
VSWR	-	1.5		
Passive Intermodulation (3rd Order, 2 x 43dBm)	dBc	-150		
Maximum Effective Power per Port	Watt	350		

**ELECTRICAL SPECIFICATIONS**

Impedance	Ohm	50
Polarization	Deg	±45°

**MECHANICAL SPECIFICATIONS**

Dimensions - H x W x D	mm (in)	1990 x 499 x 199 (78.3 x 19.6 x 7.8)
Weight (Antenna Only)	kg (lb)	27.9 (61.5)
Weight (Mounting Hardware only)	kg (lb)	4.5 (9.9)
Packing size- HxWxD	mm (in)	2235 x 595 x 295 (88 x 23.4 x 11.6)
Shipping Weight	kg (lb)	38.5 (84.9)
Connector type		4 x 4.3-10 Female at bottom + 2 AISG connectors (1 male, 1 female)
Radome Material / Color		Fiberglass / Light Grey RAL7035

**TESTING AND ENVIRONMENTAL**

Temperature Range	°C (°F)	-40 to 60 (-40 to 140 )
Lightning protection		Direct Ground
Survival/Rated Wind Velocity	km/h	200 (150 )
Wind Load @Rated Wind Front	N	668
Wind Load @Rated Wind Side	N	531
Wind Load @Rated Wind Rear	N	793

**APXVBB20B\_43-C-I20, -A-I20**

4-Ports, X-Pol, Panel Antenna, 2.0m, 2x 698-960MHz, 65deg, Integrated RET



**ORDERING INFORMATION**

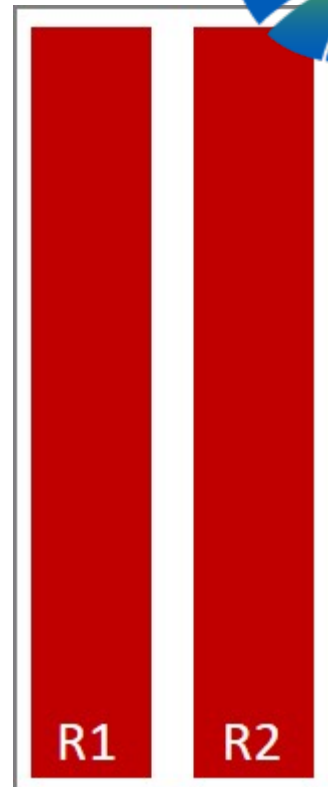
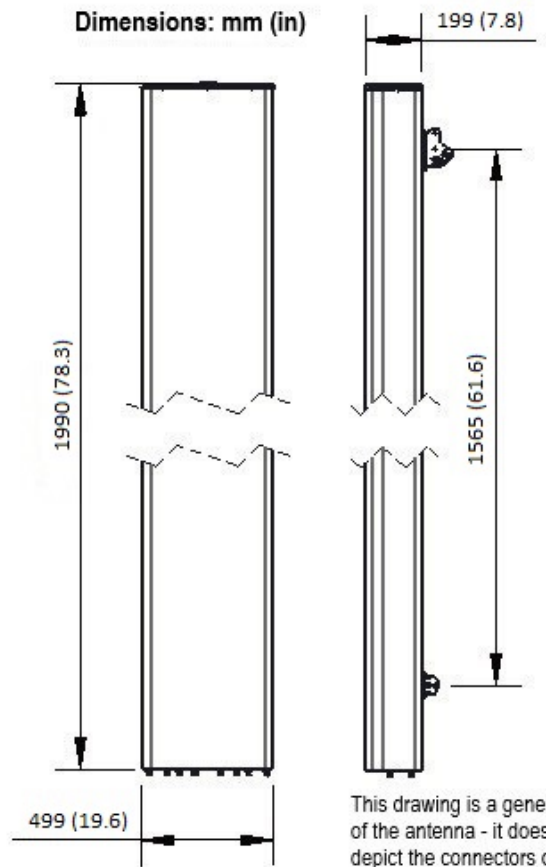
Order No.	Configuration	Mounting Hardware	Mounting pipe Diameter	Shipping Weight kg(lb)	Mounting Hardware Weight kg(lb)
<b>APXVBB20B_43-C-I20</b>	Internal RET (ACU-I20-B2)	APM50-B1	50-110mm	38.5 (84.9)	4.5 (9.9)
<b>APXVBB20B_43-A-I20</b>	Internal RET (ACU-I20-B2)	APM50-B1N (Direct Pipe no tilt)	50-110mm	37.4 (82.4)	3.4 (7.5)



PRODUCT DATASHEET

APXVBB20B\_43-C-I20, -A-I20

4-Ports, X-Pol, Panel Antenna, 2.0m, 2x 698-960MHz, 65deg, Integrated RET



External Document Links  
[APM50\\_Series\\_Installation\\_Instructions](#)

- Notes
- All electrical parameters are compliant with BASTA NGMN 11.1 requirements.
  - For additional mounting information please click "External Document Links".
  - **Radiating patterns:** [Request pattern files](#)