

**APXVBB26H2\_43-C-I20, -A-I20**

4-Ports, X-Pol, Panel Antenna, 2.5m, 2x 698-960MHz, 65deg, Integrated RET



**FEATURES / BENEFITS**

- 4 ports / 2 cross pol system in low band (698-960MHz)
- Integrated and field replaceable SRET
- ACU HW Version: HRLS200608H1.00
- Optional with Direct Pipe no tilt mounting hardware (Model name Suffix -A-I20)
- Compliant with AISG V2.0 and 3GPP
- Optimized radome for low windload.

**Technical features**

**ELECTRICAL SPECIFICATIONS**

Electrical Specification Header		Low Band Array (698-960 MHz) [R1]		
Frequency Band	MHz	698-806	790-894	880-960
Gain Typical	dBi	16	16.4	16.1
Gain Over all Tilts	dBi	15.5 +/- 0.5	15.9 +/- 0.5	16 +/- 0.1
Azimuth Beamwidth 3dB	Deg	66.3 +/- 3.5	64.6 +/- 3.5	64.7 +/- 4.7
Elevation Beamwidth 3dB	Deg	8.7 +/- 0.5	7.9 +/- 0.5	7 +/- 0.1
Cross Polar Discrimination at Boresight	dB	19	20	23
Cross Polar Discrimination over Sector	dB	13	10	9
F/B at +/-30deg Total Power	dB	23	22	22
First Upper Side Lobe Suppression	dB	17	19	22
Electrical Downtilt	Deg	0 to 10		
Cross Polar Isolation	dB	27		
Interband Isolation	dB	27		
VSWR	-	1.5		
Passive Intermodulation (3rd Order, 2 x 43dBm)	dBc	-153		
Maximum Effective Power per Port	Watt	250		



**ELECTRICAL SPECIFICATIONS**

Electrical Specification Header		Low Band Array (698-960 MHz) [R2]		
Frequency Band	MHz	698-806	790-894	880-960
Gain Typical	dBi	16.1	16.1	16.8
Gain Over all Tilts	dBi	15.6 +/- 0.5	16 +/- 0.1	16.3 +/- 0.5
Azimuth Beamwidth 3dB	Deg	66.6 +/- 3.5	64.3 +/- 3.8	64.9 +/- 4
Elevation Beamwidth 3dB	Deg	8.7 +/- 0.5	7.9 +/- 0.5	7.1 +/- 0.1
Cross Polar Discrimination at Boresight	dB	22.7	22	27
Cross Polar Discrimination over Sector	dB	15	10	9
F/B at +/-30deg Total Power	dB	23	22	22
First Upper Side Lobe Suppression	dB	17	19.3	22
Electrical Downtilt	Deg	0 to 10		
Cross Polar Isolation	dB	27		
Interband Isolation	dB	27		
VSWR	-	1.5		
Passive Intermodulation (3rd Order, 2 x 43dBm)	dBc	-153		
Maximum Effective Power per Port	Watt	250		

**ELECTRICAL SPECIFICATIONS**

Impedance	Ohm	50
Polarization	Deg	±45°

**MECHANICAL SPECIFICATIONS**

Dimensions - H x W x D	mm (in)	2498 x 469 x 205 (98.4 x 18.5 x 8.1)
Weight (Antenna Only)	kg (lb)	27.2 (60)
Packing size- HxWxD	mm (in)	2698 x 544 x 330 (106.2 x 21.4 x 13)
Connector type		4 x 4.3-10 Female at bottom + 2 AISG connectors (1 male, 1 female)
Radome Material / Color		Fiberglass / Light Grey RAL7035

**TESTING AND ENVIRONMENTAL**

Temperature Range	°C (°F)	-40 to 60 (-40 to 140 )
Lightning protection		Direct Ground
Survival/Rated Wind Velocity	km/h	200 (150 )

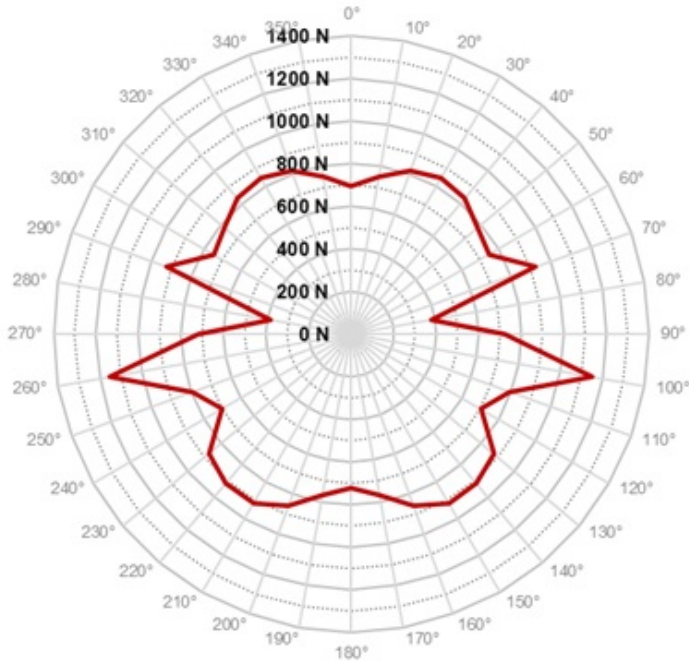
**APXVBB26H2\_43-C-I20, -A-I20**

4-Ports, X-Pol, Panel Antenna, 2.5m, 2x 698-960MHz, 65deg, Integrated RET



**ORDERING INFORMATION**

Order No.	Configuration	Mounting Hardware	Mounting pipe Diameter	Shipping Weight kg(lb)	Mounting Hardware Weight kg(lb)
<b>APXVBB26H2_43-C-I20</b>	Internal RET(ACU-I20-H12I)	APM50-HS	50 - 125mm	42.6 (93.9)	9.0 (19.8)
<b>APXVBB26H2_43-A-I20</b>	Internal RET(ACU-I20-H12I)	APM50-HSN (Direct Pipe no tilt)	50 - 125mm	39.6 (87.3)	6.0 (13.2)



Rated Wind Speed, Km/h	150
Wind Load Frontal, Resultant, N	693
Wind Load Side, Resultant, N	720
Wind Load Rear, Resultant, N	723
Maximum Wind Load, Resultant, N	1153
Maximum Wind Load, Drag Force, N	916



Port	Array	Frequency	RET	AISG RET UID
1	R1	698-960 MHz	R1	RFxxxxxxxxxx-R1
2				
3	R2	698-960 MHz	R2	RFxxxxxxxxxx-R2
4				

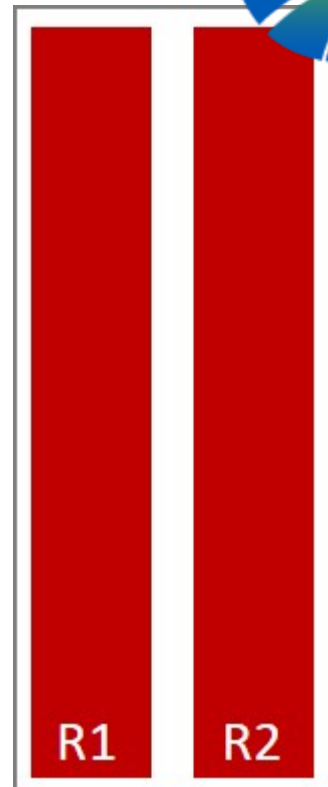
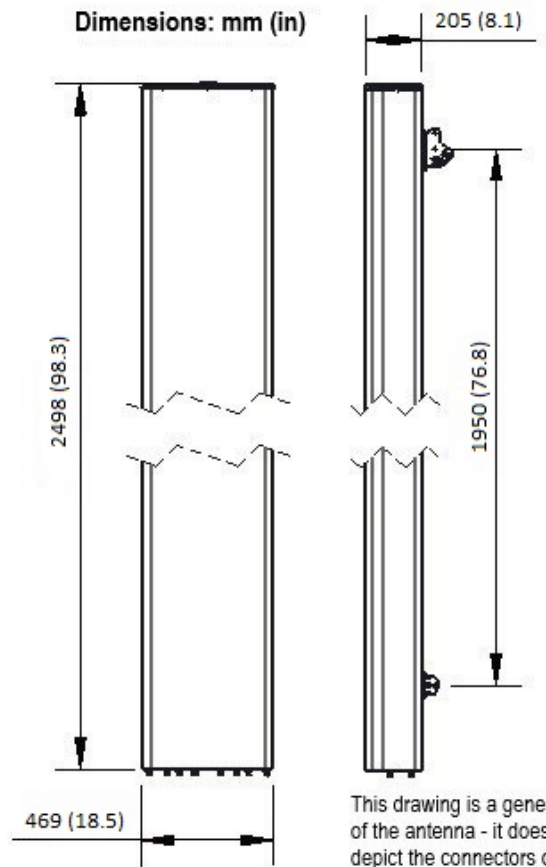
**NOTE: RET motors will tilt one at a time, not simultaneously**



PRODUCT DATASHEET

APXVBB26H2\_43-C-I20, -A-I20

4-Ports, X-Pol, Panel Antenna, 2.5m, 2x 698-960MHz, 65deg, Integrated RET



External Document Links  
[APM50\\_Series\\_Installation\\_Instructions](#)

- Notes
- All electrical parameters are compliant with NGMN P-BASTA 12 requirements.
  - For additional mounting information please click "External Document Links".
  - **Radiating patterns:** [Request pattern files](#)